

A HOME BUYER SPECIAL

DREAM HOME SHOWCASE

CUSTOM • HYBRID • LOG • TIMBER

LUXURY LOOKS INSPIRING IDEAS

OLD WORLD
TO MODERN:
STYLES
YOU'LL
LOVE

ALL SIZES & BUDGETS
11 STUNNING HOMES

dreamhomeshowcasemag.com

Getting Away From It All

Wisconsin Log Homes designs and builds a low-maintenance, high-efficiency retreat.

At the edge of a wooded cliff overlooking one of Illinois' most beautiful lakes is the rustic retreat of Ken and Tammy Barba and their four active children. After discovering the perfect setting, the Barbabas set out to find a company that could handle their home project from design to construction. With their work schedules and family responsibilities, the couple needed a dependable team.

After extensive research, the Barbabas selected Wisconsin Log Homes, a national design-and-build company that specializes in energy-efficient hybrid log and timber homes, to turn their long-time dream of building a log home into a reality. "Wisconsin Log Homes offered everything we were looking for. Not only did we want a turnkey home, we wanted a classic look with modern amenities and high efficiency," Ken explains. "Though the idea of a traditional log home has appeal, the concerns that accompany that would have been too labor-intensive for our lifestyle."

The Barbabas' top design priorities were to maximize space and their prop-

erty's incredible views. The home would also need to easily accommodate lively crowds of friends and family so the hosts could enjoy the festivities as well. With that in mind, Wisconsin Log Homes created a 4,834-square-foot, open floor plan that includes plenty of private and communal spaces.

Guests are welcomed into the home with a breathtaking panoramic window wall outlined with oversized timbers in the great room. The spacious kitchen shares its open design with the dining room leading to a deck, expanding usable living space to the outdoors. The master bedroom suite sits in its own wing. The kids' space offers two large bedrooms upstairs and an open loft play area.

"Our favorite part of our vacation home is the sense of seclusion and feeling like we're able to get away from it all," Ken says. "Though it's less than an hour-and-a-half drive from our primary residence, as soon as we turn into our gravel drive and see those timbers supporting the portico, we know we are on vacation."



Photos by KCJ Studios

OPPOSITE: A vaulted ceiling soars over the great room's window wall, which captures a panoramic view of the shoreline and beyond. A candle-lit style chandelier and stone fireplace add drama and complement the wood tones.
BELOW: Persuading guests to linger a little longer, a custom-designed portico offers shelter, while a stunning six-foot double entry door makes a stunning first impression.





ABOVE: With an emphasis on the beautiful craftsmanship of the logs and timbers, this simple, but elegant, dining room is the perfect place to enjoy a meal and the spectacular lake views through glass doors that lead to a spacious deck.

CENTER: Polished natural granite countertops harmonize beautifully with rugged stone and classic hardwood floors, adding a touch of elegance to this efficient kitchen. Simple saddle stools wrap around the peninsula, creating a space just right for entertaining while cooking family meals.

OPPOSITE TOP: Full of youthful personality, one of two large upper bedrooms is decorated to be both fun and comfortable. Accented with painted walls, the wood tones of the logs stand out and add texture.



BOTTOM RIGHT: Towering over a wooded cliff, this prow-style vacation home blends seamlessly with its setting with log walls, dry-stacked stone and a winding staircase that leads right to the shore. The multi-level plan makes excellent use of the sloped property and its breathtaking views.



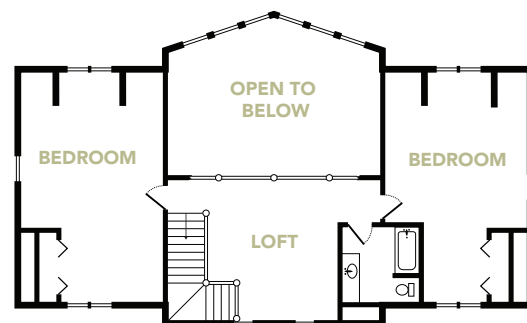
TAKING YOU HOME, NATURALLY.
SINCE 1976

800-844-7974
www.wisconsinloghomes.com
email: info@wisconsinloghomes.com

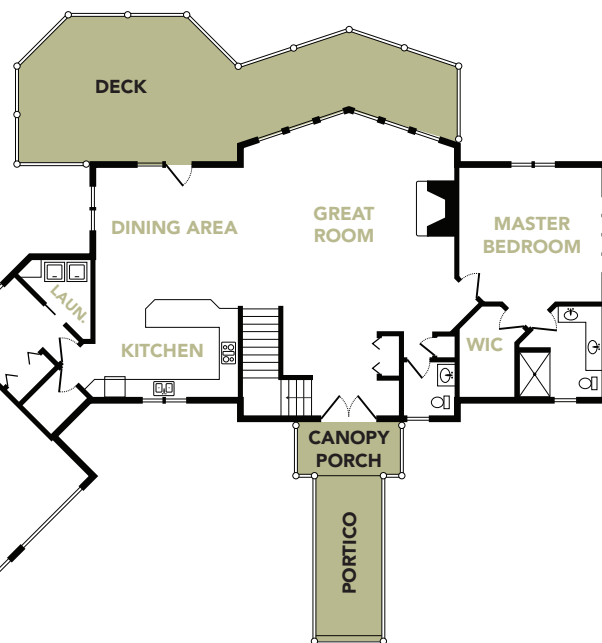
featured
FLOOR PLANS



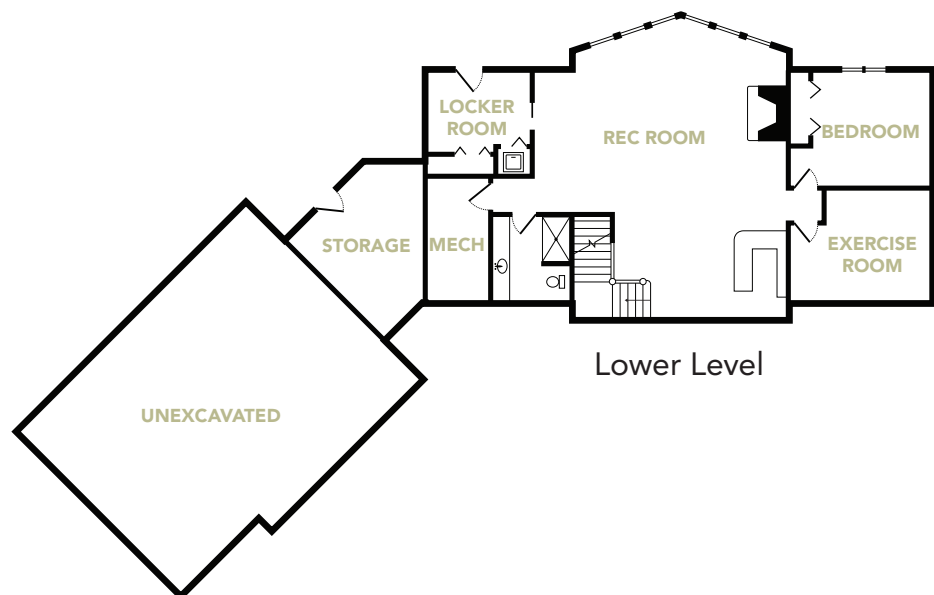
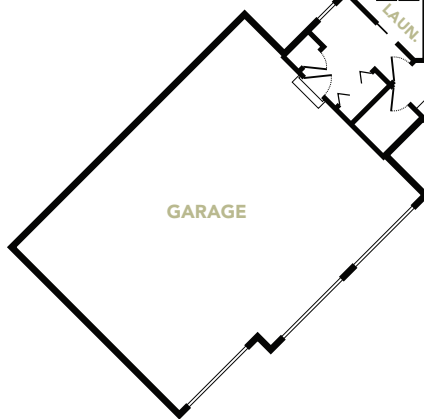
For a photographic tour of this home, see page 40.



Upper Level



Main Level



Lower Level

MODEL NAME

Fourwinds Lodge

Bedrooms: 4
 Baths: 3 full, 1 half
 Square Footage: 4,834

WISCONSIN LOG HOMES
 TAKING YOU HOME, NATURALLY.
 SINCE 1976

800-844-7974
 www.wisconsinloghomes.com
 email:
 info@wisconsinloghomes.com

Circle 044 on Free Information Card