

A HOME  
BUYER  
SPECIAL

32 CUSTOM FLOOR PLANS

# DREAM HOME SHOWCASE

CUSTOM • HYBRID • LOG • TIMBER

## TOUR 10 HOMES

INSPIRING DESIGNS

EASY ENTERTAINING

BIG FAMILY GATHERINGS

WINE ROOMS  
HOME THEATERS  
KITCHENS FOR PARTIES

[www.DREAMHOMESHOWCASEMAG.com](http://www.DREAMHOMESHOWCASEMAG.com)



# Meeting in the Middle

A couple builds a hybrid timber frame home that blends styles.

Photos by KCJ Studios

As newlyweds, Stephanie and Nate's first big test of their marriage was to build their custom home. Unlike Stephanie, Nate grew up in a log home and loved the natural ambiance of wood. Stephanie had difficulty visualizing how her contemporary taste would fit with log construction. After exploring their options, the couple decided a

hybrid timber frame home could please them both.

Since they were just starting life together, Stephanie and Nate had to design a home that would suit them now and accommodate a family in the future. Their goal was to create as much living space as possible while keeping costs in check. The couple turned to the experts at Wis-

consin Log Homes, a national design-and-build company that has specialized in energy-efficient hybrid log and timber homes since 1976.

"We wanted a distinctive home with a subtle balance between the site, the floor plan and the architectural detailing," Nate says.

Designing a plan with spaces that flow

Showcasing a tasteful combination of contemporary and rustic styles through the use of interesting colors, materials and lines, this hybrid home features a transparent stain as the main exterior color. Medium brown accents add depth and complement the architecture.



**OPPOSITE:** The 23-foot high great room is accented with custom-crafted timbers, a tongue-and-groove ceiling and windows that capture the views. **LEFT:** The focal point of the foyer, the open timber style staircase with double top rail, was custom crafted to create a craftsman feel and establish a sense of strength and stability not often seen in ready-made stair systems. The catwalk acts as a transition between the connecting foyer and great room. **BELOW:** An eclectic mix of styles mingles in the kitchen. Stainless-steel appliances are surrounded by Indian Copper granite and distressed craftsman-style cabinets. Opaque amber mini-pendants add a pop of color. "The best part about our kitchen is its openness," Stephanie says.



together was the first focus. In the great room, timbers outline the window wall and a dry-stacked stone fireplace complements the custom timber trusses above. The kitchen's coffered ceilings, distressed cabinets and modern pendant lights prove that unique styles can mix in the same space.

The master bedroom suite is a private sanctuary on the main floor. Grid-patterned beams on the ceiling accent the geometry of the transom windows. In the master bathroom, self-rimming sinks that sit on the black stone countertop, a walk-in shower and

a naturally shaped, claw-foot soaking tub create a modern, spa-like feel.

Upstairs, three bedrooms, a bathroom, a family room and large catwalk provide plenty of space for kids and guests.

Stephanie and Nate wanted the home to look like it had history, even during its first year. Kiln-dried Northern white pine was used for all the interior posts and beams, and each piece was planed smooth and hand-distressed for a true vintage look.

Outside, timber siding blends with stone and shake. The

front entry features massive double upright timber posts topped with an arched collar tie beam and kingpost; matching gables on the second floor give the house more human scale.

"By definition, we refer to this home as a hybrid timber frame because it not only incorporates timber frame design elements, but it also boasts other rich building materials," says Ehren Graf, national home consultant at Wisconsin Log Homes. "Each home is inspired by its homeowners and reflects their individuality."



TAKING YOU HOME, NATURALLY.  
SINCE 1976

800-844-7974  
www.WisconsinLogHomes.com  
email: info@WisconsinLogHomes.com

Circle 063 on Free Information Card

SEE THIS FLOOR PLAN FEATURED ON PAGE 109.



TAKING YOU HOME, NATURALLY.  
SINCE 1976

800-844-7974

[www.WisconsinLogHomes.com](http://www.WisconsinLogHomes.com)

email: [info@WisconsinLogHomes.com](mailto:info@WisconsinLogHomes.com)

Circle 063 on Free Information Card



For a photographic tour  
of this home, see page 16.

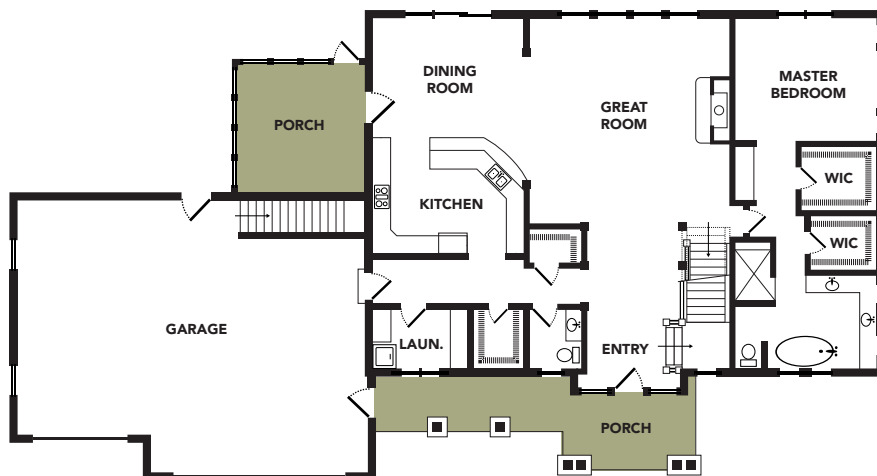
MODEL NAME

## Charlevoix

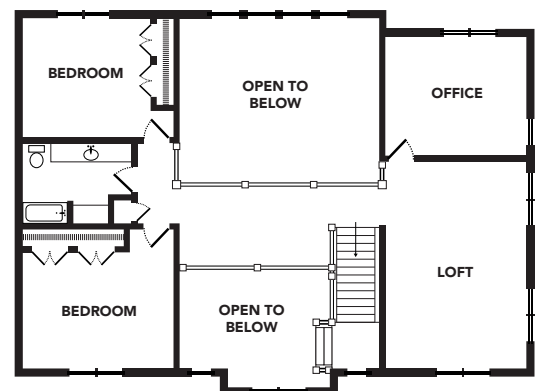
Bedrooms: 3

Baths: 2 full, 1 half

Square Footage: 3,459



Main Level



Upper Level