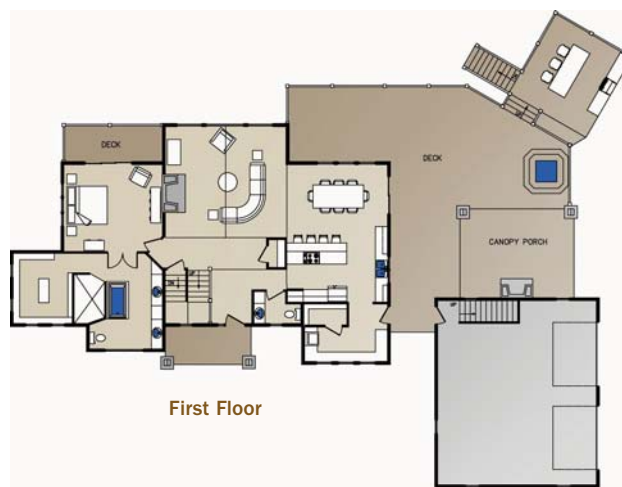
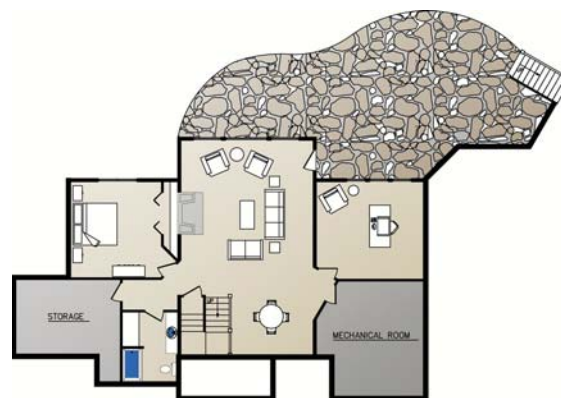




Second Floor



First Floor



Lower Level

## St. Claire II

Our National Design & Build Services Include:

- Distinctive Hybrid Log and Timber Product Selection
- Energy Efficient Thermal-Log™ Building System
- On-Site Design Consultations
- Custom Architectural Planning & Design
- Full Service Interior Design and Decor
- Custom Cabinetry Design and Provider
- National Turn-Key Construction Services

Log on to [WisconsinLogHomes.com](http://WisconsinLogHomes.com) for videos and custom floor plans.

**Bedrooms:** 4 plus bonus room

**Baths:** 4 1/2

**Square Footage:** 5,556

**Package Price:** Call for prices

Wisconsin Log Homes Inc.

2390 Pamperin Road

Green Bay WI 54313

800-844-7970

fax: 920-434-2140

[info@wisconsinloghomes.com](mailto:info@wisconsinloghomes.com)

[www.wisconsinloghomes.com](http://www.wisconsinloghomes.com)

Circle 041 on Reader Service Card for free information

[www.loghomeliving.com](http://www.loghomeliving.com)



Taking You Home, Naturally.

MARCH 2009 • LOG HOME LIVING • 79