

FLOOR PLANS

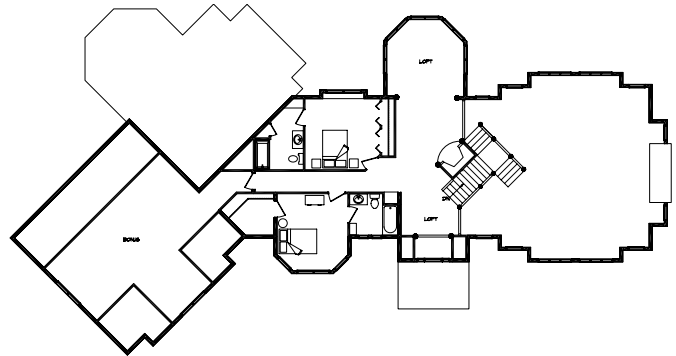


MERIDIAN PEAK

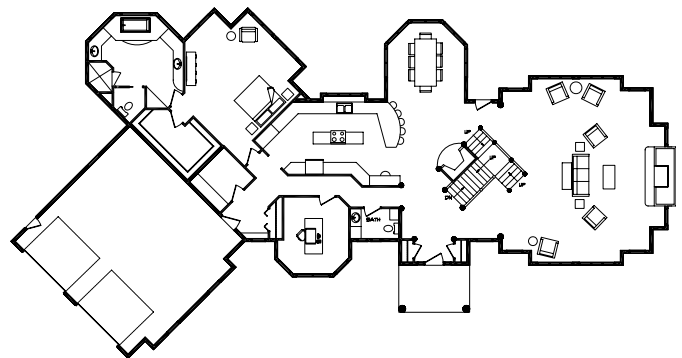
Rustic elegance at its finest. Exceptional design and exquisite detail combine to create the ultimate comforts in mountain-home living. Warm combinations of log, timber and stone, dynamic windows, octagon towers, bump-outs, and an inviting front portico give the Meridian Peak its enticing look.

The two-story great room creates eye-lifting drama with massive beams, an impressive fireplace and two striking glass walls. This versatile, open floor plan boasts a magnificent chef's kitchen, secluded master suite with indulging spa bath, and views open to the serene setting from all living spaces. Two additional bedrooms with connecting baths and bonus room are located upstairs.

Our Design Build Solution combines architectural design, interior design and decor and construction. Log on to www.wisconsinloghomes.com for video and custom floor plans.



Second Floor



First Floor

2390 Pamperin Road • Dept. 77
Green Bay WI 54313
Phone: 800-844-7977
Fax: 920-434-2140
E-mail: info@wisconsinloghomes.com
www.wisconsinloghomes.com



1st Floor: 2,906 sq. ft.
2nd Floor: 2,020 sq. ft.

Total Area: 4,926 sq. ft.
Package Price: Call for prices

Circle 045 on Reader Service Card for free information