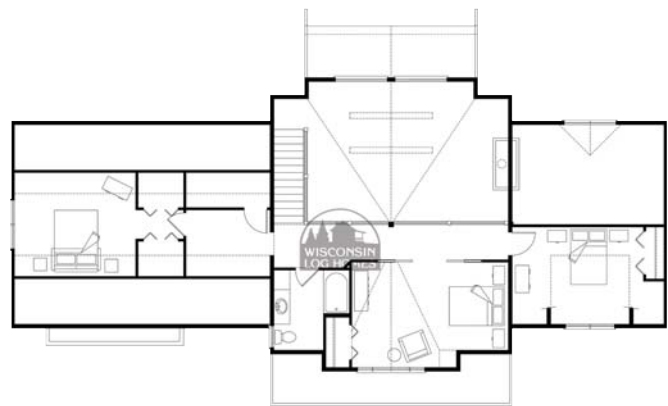




## FOX POINT II

Intelligently modern, naturally appealing. The Fox Point II features a well-designed open floor plan with a fabulous first-floor master bedroom. A cathedral ceiling and large windows create a spacious and welcoming greatroom. Upstairs an overlook leads to three bedrooms and a bathroom.

Our Design Build Solution combines architectural design, interior design and construction. Log on to [www.wisconsinloghomes.com](http://www.wisconsinloghomes.com) for videos and custom floor plans.



**Second Floor**



**First Floor**

2390 Pamperin Road • Dept. 77  
 Green Bay WI 54313  
 Phone: 800-844-7977  
 Fax: 920-434-2140  
 E-mail: [info@wisconsinloghomes.com](mailto:info@wisconsinloghomes.com)  
[www.wisconsinloghomes.com](http://www.wisconsinloghomes.com)



**Total Area:** 2,489 sq. ft.  
**Package Price:** Call for prices

Circle 044 on Reader Service Card for free information