

# Charlevoix

This hybrid transitional design blends rich hand-crafted timbers, natural materials, and complementary colors. Call 1-800-844-7974 to tour this home!

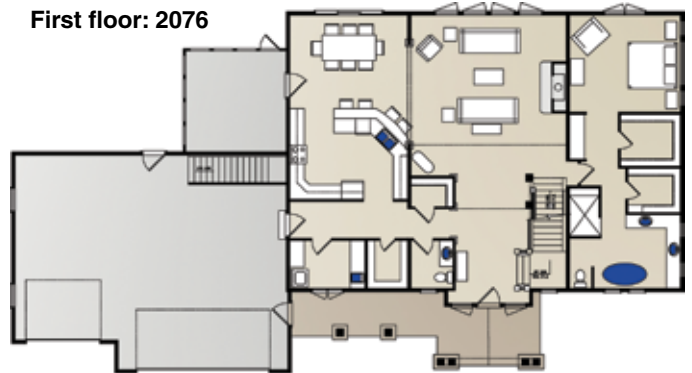


Total Square Footage: 3459

Second floor: 1383



First floor: 2076



## NATIONAL DESIGN & BUILD SERVICES:

Distinctive Hybrid Log & Timber Product Selection

Energy Efficient Thermal-Log™ Building System

On-Site Design Consultations

Custom Architectural Planning & Design

National Turn-Key Construction Services

Full Service Interior Design & Décor

Custom Cabinetry Design & Provider



Taking You Home, Naturally.

2390 Pamperin Road,

Green Bay, WI 54313

800-844-7974

Fax: 920-434-2140

info@wisconsinloghomes.com

www.wisconsinloghomes.com

Circle 230 on Reader Service Card for Free Information

Log on to [www.wisconsinloghomes.com](http://www.wisconsinloghomes.com) for videos and custom floor plans.