

Alpine Meadow III

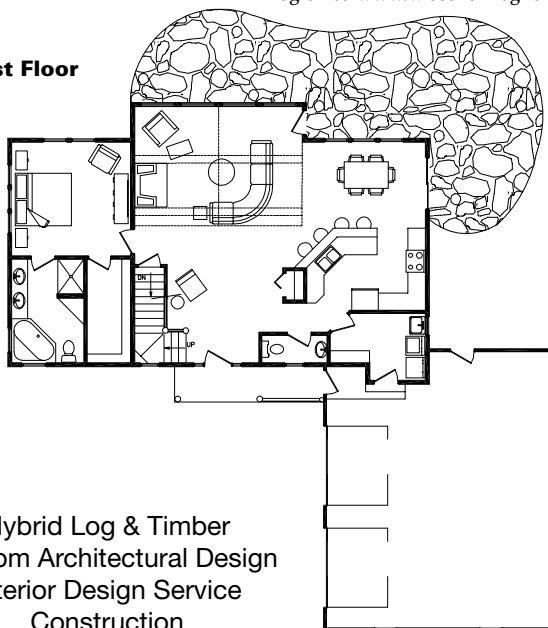


MODEL: Alpine Meadow III
BEDROOMS: 3 BATHROOMS: 3½ SQUARE FOOTAGE: 2,350
Call for Pricing

This signature home is detailed in comfort and designed to live larger than its modest size. A charming entry captures the dramatic architecture of the great room's striking glass wall. High performance windows are positioned throughout the design to maximize natural light. Enjoy the finest in entertaining with a kitchen that flows freely to the dining and great room. An expansive wrap-around stone terrace offers rejuvenating space to enjoy the outdoors. The first floor master suite is tucked away for privacy, with two additional bedroom suites upstairs.

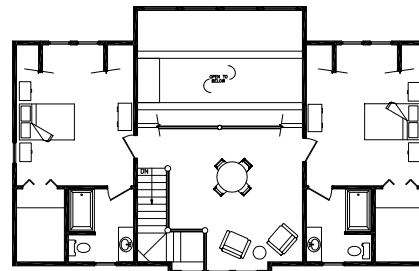
Our Design Build Solution combines architectural design, construction, and interior design & décor.
Log on to www.wisconsinloghomes.com for videos and custom floor plans.

First Floor



Hybrid Log & Timber
Custom Architectural Design
Interior Design Service
Construction

Second Floor



Taking You Home, Naturally.

2390 Pamperin Road
Green Bay, WI 54307-1005
800-844-7972
Fax: 920-434-2140
info@wisconsinloghomes.com
www.wisconsinloghomes.com

Circle 230 on Reader Service Card for Free Information