



# focus on design

LOG & TIMBER HOMES - ARCHITECTURAL DESIGN - CONSTRUCTION - INTERIOR DESIGN & DÉCOR



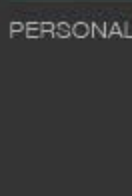
## CARIBOU

TOTAL SQUARE FOOTAGE: 2,180

FIRST LEVEL: 1,732 SQ. FT. SECOND LEVEL: 448 SQ. FT.

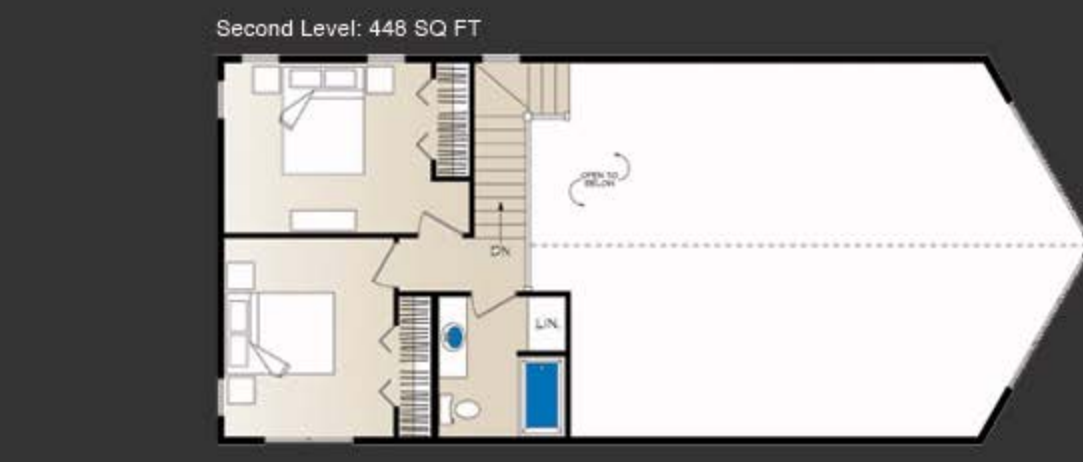


This flexible prow-style floor plan focuses on functionality and rustic simplicity. An easy living galley kitchen and open dining/great room combination makes day-to-day living and entertaining a breeze. A sheltered patio and pergola expands livable square footage with less cost through highly appreciated outdoor living spaces.



floor plan  
VIEW FLOOR PLAN DETAILS.  
[CLICK TO VIEW.](#)

PERSONALIZE THIS PLAN TO FIT YOUR NEEDS AND STYLE.



### STAY CONNECTED WITH WISCONSIN LOG HOMES



### ORDER PLANNING INFORMATION

- Architectural Concepts Guide
- Design Build Solution Workbook
- Taking You Home, Naturally Brochure
- Interior Design & Décor Guide

[ORDER NOW](#)



### The Industry's Most Complete NATIONAL DESIGN & BUILD SERVICES

#### NEW FLOOR PLANS & VIDEOS



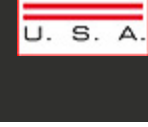
#### Taking You Home, Naturally.

- Distinctive Log & Timber Product Selection
- Energy Efficient Thermal-Log™ Building System
- Architectural Planning & Design
- On-Site & In-House Design Consultations
- Turn-Key Construction Services Available
- Full-Service Interior Design & Decor
- Custom Cabinetry Design & Provider

**FREE**  
WORKBOOK

LOG ON TO [WWW.WISCONSINLOGHOMES.COM](http://WWW.WISCONSINLOGHOMES.COM) FOR...

- Photo Galleries
- Videos
- Custom Floor Plans
- Featured Home Projects
- Founder's Blog
- Magazine Articles & Stories



Contact one of our experienced [Home Consultants](#) to answer your questions or to help you get started on your new home design.

Thank You,  
From your friends at WISCONSIN LOG HOMES

**What you think is most important to us! Please take our [short survey](#) and tell us what you think about this E-newsletter or [e-mail](#) us directly.**

For custom plans & videos, log on to: [www.wisconsinloghomes.com](http://www.wisconsinloghomes.com)