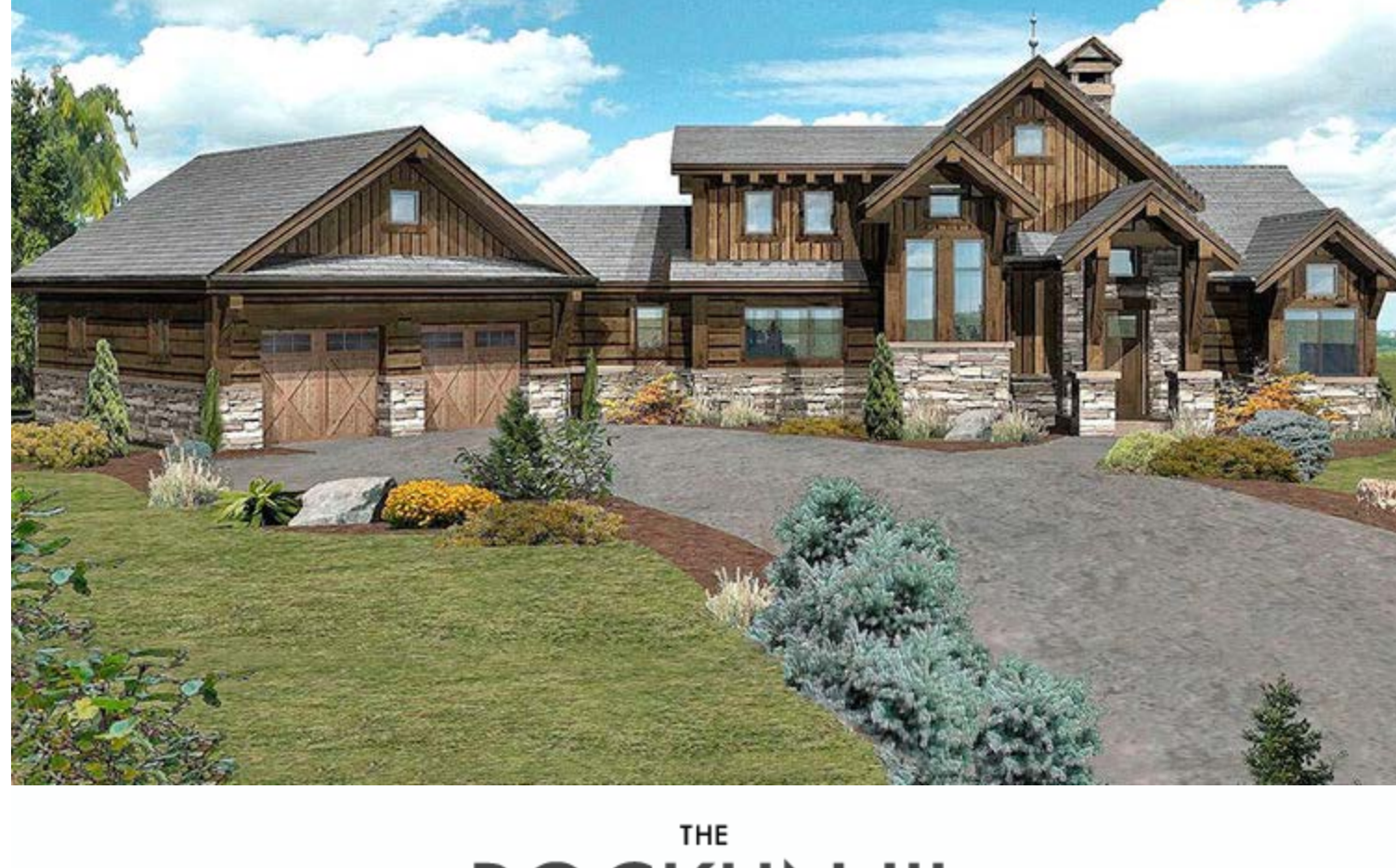


If you are unable to see the message below [click here](#).



FOCUS ON DESIGN | WLH E-NEWSLETTER

1-800-678-9107 INFO@WISCONSINLOGHOMES.COM



THE ROCKLIN III

TOTAL SQUARE FOOTAGE: 1,790

FIRST FLOOR: 1,440 SQ. FT.

SECOND FLOOR: 350 SQ. FT.

OPTIONAL LOWER LEVEL: 866 SQ. FT.

A 1,790 square foot version of one of our most popular plans, this versatile mountain-style home boasts an open and efficient floor plan ideal for a primary residence or vacation home. The kitchen, dining and great room are all connected to one another and open to an expansive patio with canopy porch off the great room. Gorgeous views can be seen of your property from every space throughout the home. The master suite is privately tucked in its own wing of the main level and provides patio access. An additional bedroom suite is located on the second floor and another can be placed in the optional lower level.

CUSTOM LOG, TIMBER & HYBRID HOMES – NATIONAL DESIGN & BUILD SERVICES – FAMILY OWNED SINCE 1976

Your dream. Our Expertise.

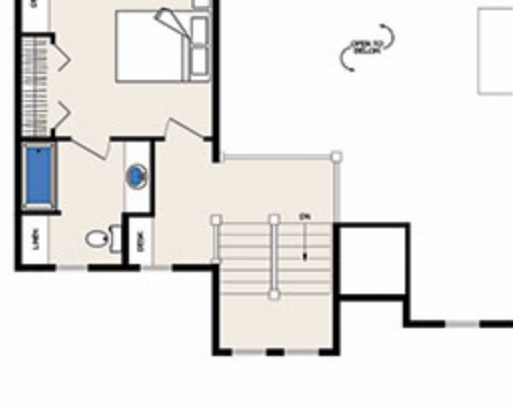


OUR CUSTOM DESIGNS ARE SIMPLY MEANT TO INSPIRE YOUR DREAM HOME VISIONS. MODIFY THIS PLAN IN SIZE, LAYOUT AND STYLE TO FIT YOUR PERSONAL NEEDS AND PROPERTY, OR START COMPLETELY FROM SCRATCH ON A NEW DESIGN.

FIRST LEVEL: 1,440 SQ. FT.



SECOND LEVEL: 350 SQ. FT.



OPTIONAL LOWER LEVEL: 866 SQ. FT.



[VIEW DESIGN DETAILS ON OUR WEBSITE](#)

[VIEW ORIGINAL 2,378 SQ. FT. ROCKLIN DESIGN](#)

EXPERIENCE THE ART OF DESIGN FREEDOM®



STAY CONNECTED WITH US. FOLLOW US ON SOCIAL NETWORKS TO GET THE LATEST PHOTOS FROM OUR CURRENT PROJECTS!



CONSTRUCTION COMPLETED THIS MONTH FOR OUR "SUMMERLIN" FLOOR PLAN!

DESIGNED, BUILT AND FULLY DECORATED BY WISCONSIN LOG HOMES

Featuring rustic-white shiplap and painted timbers throughout!

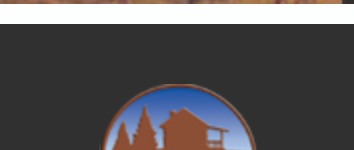
[VIEW SUMMERLIN DESIGN & COMPLETED PHOTOS HERE](#)

[VIEW OUR BLOG ABOUT THE CREATION OF THIS HOME HERE](#)

ORDER PLANNING INFORMATION

- Architectural Concepts Guide
- Design Build Solution Workbook
- Wisconsin Log Homes Digital Brochure
- Interior Design & Décor Guide

[ORDER NOW](#) [FREE WORKBOOK](#)



LOG, TIMBER & HYBRID HOMES
NATIONWIDE SINCE 1976

NATIONAL LOG, TIMBER FRAME & HYBRID STYLE HOMES

- Distinctive Log, Timber & Hybrid Product Selection
- Energy Efficient Thermal-Log™ Building System
- On-Site & In-House Design Consultations
- Custom Architectural Planning & Design
- Turn-Key Construction Services Available
- Full Service Interior Design & Décor



LOG ON TO WWW.WISCONSINLOGHOMES.COM FOR

- Custom Floor Plans
- Photo Galleries
- Video Tours
- Order & Download Planning Information
- Featured Home Projects
- Custom Wood Home Blog
- Magazine Articles & Stories

Email one of our National Home Consultants or call 1.800.678.9107 with any questions you have or to discuss your custom wood home project.

Log on to wisconsinloghomes.com to learn more about our nationwide homes and services.