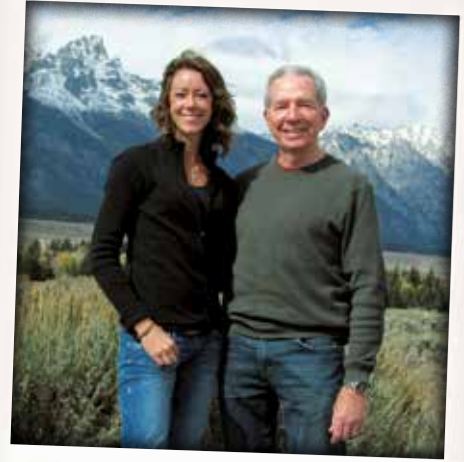


FLOOR PLANS

REAL PEOPLE. REAL SOLUTIONS.



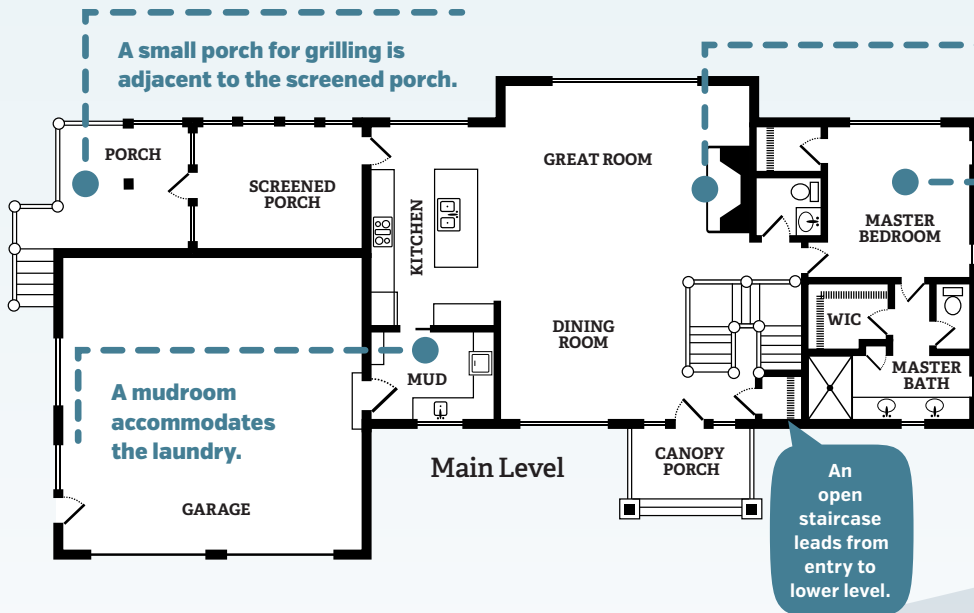
Jean and Rae

Ranch with a Lake View

For their vacation retreat along a Northwoods chain of lakes, Jean and Rae Payne envisioned something rustic and western — like the homes they fell in love with during visits to Wyoming and Colorado.

Why a log home: Rae and Jean began their search with a full-log home in mind. They eventually chose a half-log house that would give them the look they wanted, but have the sort of upkeep with which they were already familiar.

Most important features: “We wanted our home to be rustic, but not an over-the-top ‘cabin,’” Jean explains. With their sloped lakefront lot, they knew they wanted the main living areas to be on one floor, with plenty of windows to take advantage of the view. For Jean, a kitchen that was open to the rest of the home was a must.

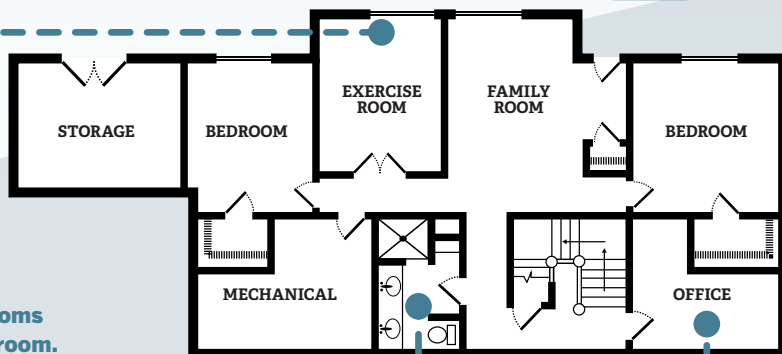


ONLINE RESOURCE

Browse floor plans of all shapes and sizes in our growing online collection.
loghome.com/floorplans

The lower-level gym looks out over the lake.

Two guest rooms share a bathroom.



PLAN SPECS

Square Footage: 2,800

Bedrooms: 3

Baths: 2 full, 1 half

An office allows the Paynes to work from home when needed.



The Lowdown

The Paynes relied on the experts at Wisconsin Log Homes to bring their Western-style ranch to life. Log siding is accented with cedar trim on the outside, and cedar posts carry the look to the interior. A screened porch is perfect for outdoor enjoyment without interference from mosquitoes. Utilizing the site's slope allowed for a large lower level that looks out on the lake and provides two guest bedrooms, an office and a gym.



The Inside Scoop

For some log home devotees, only full-log walls will do. For others, a half-log (log siding) house is a desirable option that provides a familiar maintenance routine and highly insulated walls. Wisconsin Log Homes recommends that homeowners re-stain their log siding and touch-up caulking every few years. Intrigued by log siding? Keep these points in mind:

- **Style options abound.** Log siding is available in a wide variety of profiles. You can choose a rounded look –

complete with chinking if that's your preference – or a flatter profile. You also can choose from a range of exterior log corner styles.

- **Bring it inside.** If you line your interior walls with log siding as well, you'll create a full-log look for your home.
- **Mix it up.** Many of Wisconsin Log Homes' clients who use log siding outside choose a mix of drywall and wood accents like log posts and beams on the interior. Stone finishes add even more texture.