



Grand Cottage

Persistence pays off when one couple turns a small idea into their dream getaway.

story by Teresa L. Wolff > photos by Roger Wade > styling by Debra Grahl

All Judy Bottarelli ever wanted was a small, intimate home on a lake. As a child, she and her family rented a waterside cottage in Wisconsin each summer. Those memories stayed with her, and she longed for her own children to share that same experience.

As they raised their family, Judy and her husband, Bruno, put Judy's dream on hold until they were able to afford a second home. Once their finances were in order, Judy spent the next five years searching for an existing vacation residence. She laughingly recalls, "Each morning, as soon as Bruno headed off to work, I jumped in the car and scoured the countryside north of Chicago for my cottage, but to no avail."

Judy never faltered in her quest, and eventually she located a 1-acre parcel on Green Lake of the Waterdale Lake chain. Although it cost twice what she and Bruno had budgeted, they agreed the location—with its sandy beach and beautiful view of the lake—was perfect. And they weren't the only ones who felt that way.

"We were babysitting our son's English bulldog. This dog absolutely hates water. We were stunned when he jumped out of the car, waded into the lake, came out, plopped down on the sand and began sunning his belly. We figured, if he approved, it must be something special. That was the deciding moment," Judy states with a laugh.

With their property in hand, the couple needed to decide what style home to build. They had fallen in love with log homes during their travels to Colorado but equally admired the historic Cape Code residences in Nantucket, Massachusetts. Their solution was to meld these two styles, incorporating design aspects of the Caribbean, Arizona, Italy, Australia, Africa and Midwest farms in the process.

An architect, Bruno was able to put his stamp on the three-level, 6,800-square-foot home by finding the correct balance of styles and creating the coziness Judy desired. "We also used Christopher Alexander's definitive treatise on timeless design,



The hand-hewn cedar (above) was treated with a bleaching stain that will turn the exterior to a maintenance-free soft, silver gray over time. Hand-chinking gives the home a true old-time appearance.

Cascading roofs (opposite), plenty of windows, stone steps and thick walls all contribute to the architectural appeal of this vacation home. Authentic detailing is used throughout the home to replicate the organic growth and additions made to homes of the past.

A *Pattern Language*, as a guiding pattern to create our most notable places in the home,” Bruno adds.

After careful consideration, Judy and Bruno opted for a hybrid, energy-efficient home with hand-hewn flat-surface logs and timbers from Wisconsin Log Homes. For their builder, the Bottarellis hired Randy Thelen, owner of Thelen Total Construction, because of his experience building lake houses. They also were impressed with the number of true craftsmen on the Thelen team.

Bruno adds, “I also needed someone who would be patient enough to work with me. I have a tendency to be overly meticulous. Randy’s easy-going temperament fit my expectations beautifully.”

Randy notes the overall goal was to give the home the impression of a cottage that had been on the property for many years, but had been added onto over time. This contributed greatly to the charm of the residence, he relates.

DeLuca Architects designed the home with six baths and 2,800 square feet of outdoor living space divided between three outdoor decks and patios. Each floor conveniently has its own laundry room. Two fully equipped kitchens (one on the main floor, the other in the walkout lower level) make entertaining a breeze.

“We wanted each of our sons to have privacy when he’s at the lake house. Therefore, in addition to our master bedroom

The Bottarellis worked with Bea Industries in Elkhorn, Wisconsin, to create an old farmhouse style. Maple floors were sanded flush, resulting in a groove-free, low-maintenance finish. Butcher-block countertops provide a usable work surface over the beadboard cabinets. The refrigerator is clad to look like an old ice box. Judy personally selected the painted ceramic tiles forming the backsplash behind the Thermador six-burner cook top.



The wall of glass on the view side of the home includes a variety of geometric shaped panes, some with 4-x-4-thick muntins, set between the trusses and beams for a dramatic architectural focal point. The authentic casement windows and doors are thermo-paned and maintenance free. Wisconsin weathered stone provides the facing for the wood-burning stove with gas ignition. Exposed rafters, trusses, heavy post-and-beam structure and wood plank ceilings replicate how homes were built in the past. Judy hung colorful quilt pieces to visually lower the ceiling height.



The lower level (above) is modeled after a Chicago tavern. Many of the trees that were felled during excavation found new life in the home, including a cherry tree that became the top for the split-log bar. The lower Corian countertop contrasts with the mini-kitchen's stainless steel appliances but harmonizes with the kitchen cabinets and entertainment center. Sienna-stained concrete and Venetian plaster walls give the space the appearance of an underground adobe home. Patio doors open to the terrace and a view of Green Lake.

Large-diameter character logs (left) provide support for the covered deck overlooking Green Lake. Exterior room decks and railings are constructed of oiled Ipe Brazilian hardwood. This portion of the deck is accessible from the dining area, with the kitchen on the right and the great room on the left. A locking barn door slides over the patio doors for extra security when the family is not in residence.

Ship-lapped tongue-and-groove pine ceilings (above) are stained different colors to match the décor of each room. In the loft studio, the ceilings were white-washed to lighten the space. The unique king post design in the transom window contributes to the room's open aesthetic. The work craft table is ideal as a workspace for Bruno or as a place where the grandchildren can color. The furniture can be rearranged depending upon the task at hand.

Judy based the theme of each of the home's four bedrooms, complete with its own gas-burning fireplace, around the couple's travel adventures. She dubbed this guest suite (right) the "Caribbean," with accents to reflect the tropical setting of a resort they had visited. Each of the bathrooms features the same decorating style used in its corresponding bedroom. Exposed rafters accentuate the peaked ceiling.



suite, there are two more bedroom suites, each with its own full bath. A bunkroom for our grandchildren was another must. The office in the loft allows Bruno to work from home should he have a pressing project deadline,” Judy explains.

The lower level provides active spaces for the surround-sound TV lounge, pool room, Ping-Pong room, work shop, wine cellar and a future home theater. The two-story garage provides ample room to store snow mobiles and lawncare equipment. A separate guest house is set at a slight angle to the main dwelling and includes a study/bedroom and bathroom.

Bruno and Judy are committed to environmental sustainability and used sound ecological principles to develop their lakefront property, where drainage and erosion are primary concerns. To help control any potential surface pollutants from entering Green Lake, they used an arrangement of deep drainage pits filled with crushed rock to collect surface runoff. This runoff then filters through the ground and recharges the ground

Judy incorporated the blue and white nautical feel of Nantucket Island in the master bedroom with beadboard wainscoting and cottage-style window treatments. The patio doors open to the front porch overlooking Green Lake. White cornices trim the ship-lap tongue-and-groove pine ceilings.



Tumbled travertine covers the floors and walls in the master bath (left). Thelen Total Construction positioned the beadboard, which matches the cabinets, a foot lower than the ceiling to accommodate Judy's sensitivity to heights. Interior doors on the main and upper levels are 7 feet tall and 2 inches thick, similar to those that were milled during a bygone era; hydraulic door closers prevent them from slamming shut.

multi-furnace-zoned heating and air-conditioning allow us to temper only the space being occupied for greater energy efficiency. Hot water radiant floors eliminate drafts during the winter months, making all the surfaces comfortable to the touch. Automated thermostats manage comfort settings throughout the home,” Bruno explains.

Nearly all rooms in the home are equipped with Cat 5 computer network wiring, digital HDTV satellite network wiring and multiline wireless phones. The house and grounds are integrated into a seamless wireless network. iPod innovations have enabled guests to bring their own music and plug directly into strategically located iPod cradles, distributing high-quality stereo music digitally throughout the house and grounds.

“In addition to Honeywell security systems throughout, we're able to monitor the house and grounds from afar over the Internet using webcams. This convenience allows us to view the home, intruders and the weather from my laptop computer when we travel,” Bruno explains.

The vacation home truly has become a gathering place for the Bottarelli family. Their older son, Bryan, his wife, Katherine, and their children, 4-year-old Julie and 10-month-old Paige, are frequent visitors. When their younger son, Rob, is able to join them, he finds kayaking on Green Lake to be one of his favorite activities. Bruno's father enjoys fishing.

“When we're here, I feel so pampered and comforted,” Bruno proclaims. Judy adds, “Although it might be a bit more than the cottage I had envisioned, it is the ideal vacation spot for our family. I've had people tell me it's the only place they have ever seen me relax.” CBLH

aquifers. Lawns and garden areas are watered from a lake irrigation system rather than using potable water. Turf areas have been minimized to reduce the need to apply grass nutrients.

“Our home is engineered for year-round use and enables us to monitor and control heating and air-conditioning from our primary residence in Naperville, Illinois. This ensures that this home is comfortable when we arrive. High-efficiency,

RESOURCES

Square footage: 6,800 sq. ft.

bedrooms: 5

bathrooms: 6.5

Producer: Wisconsin Log Homes, Green Bay, WI.
Circle 033 on the Reader Service Card between pages 76-77 for free information

Design Architect: Bruno Bottarelli

Architect: Nicholas R. DeLuca & Associates, Architects

Builder: Thelen Total Construction Inc.

Kitchen Design and Installation: Bea Industries; Jean Stoffer Design

Surveyor: JK Surveying

Environmental Consultants: Wetland & Waterway Consulting

Landscape Design & Installation: Crane Landscape & Design; B & J Tree and Landscape Service



The grid of wells used to capture the surface run-off (above) is invisible to the eye and lies within the garden slopes and beneath the turf areas of the lawn. The beach, seawall and boathouse have been reconstructed to amply serve lakeside outdoor living and are framed by the newly planted Cottage Country Garden.



Floor TOUR

Kitchen • Great Room • Dining Room • Master Bathroom • Kids' Bunkroom

Log supplier: Wisconsin Log Homes
 2390 Pamperin Road, Green Bay, WI 54313
 800-678-9107
 info@wisconsinloghomes.com
 www.wisconsinloghomes.com

Kitchen



The hand-selected ceramic tiles comprising the backsplash pull their colors from the surrounding decor—particularly the red accents. Custom cabinets, like the ones shown here, also are a great way to personalize your kitchen, providing unique storage, like the drawers beneath the stove, and a chance to create a distinctive look for your home. The island also provides additional workspace and a central location for the sink, creating an effective kitchen workspace.

Great Room



Exterior doors and windows facing the lake, such as those in the great room, are 8 feet tall to expand the view of the lake, with an equally grand hearth to boot; the north and west window openings are smaller, more intimate and lower in scale to reflect the shorter heights of people in the past. The placement of the great room adjacent to the dining room and kitchen creates a wide, open area for entertaining and family gathering.

Dining Room

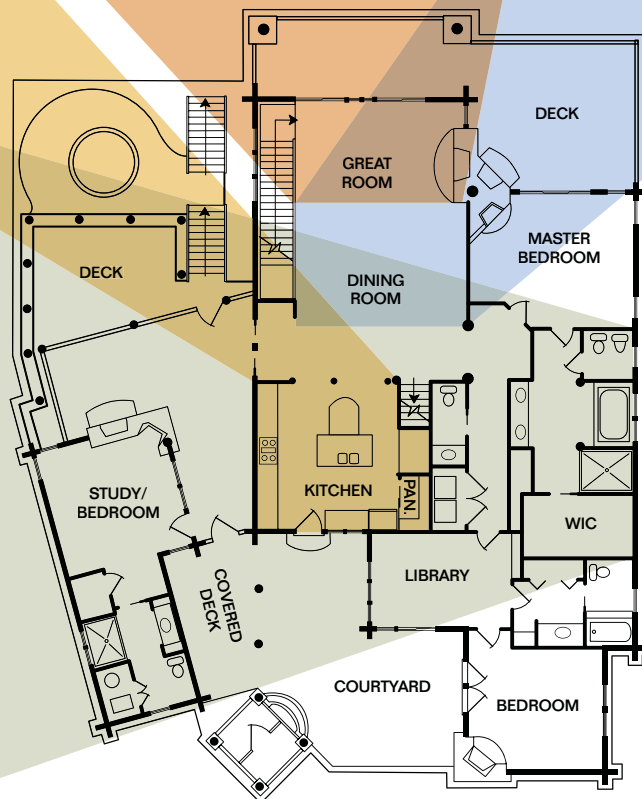


Robert Thelen of Thelen Total Construction custom built the dining table to seat 10 to 12 people—perfect for the Bottarellis and their extended family. Windsor armchairs complete the country appeal prevalent throughout the home. The classic-style hutch from Carsen's serves as a showcase for myriad service platters and knickknacks. Such pieces also can be used to store additional dishware or as a makeshift bar.

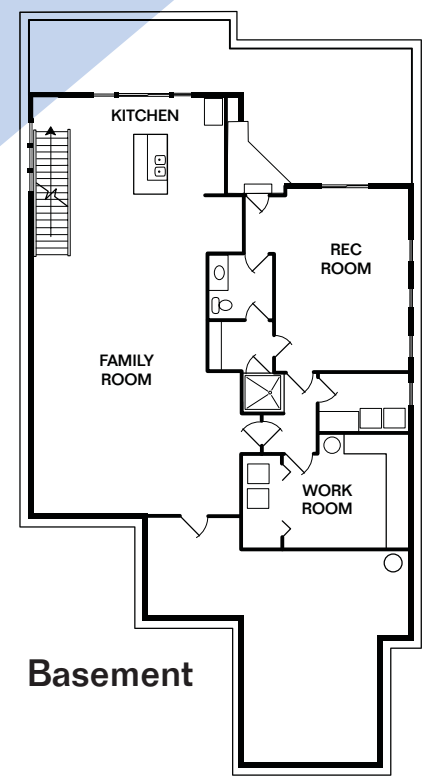
Master Bathroom



The Corian countertops and hand-towels in the master bathroom match the golden tone of the Venetian plaster wall, complementing the white bead-board for a Cape Cod appeal. An adjacent walk-in-closet—complete with a space-saving pocket door—makes for quick, easy morning prep, as do separate dual vanity sinks. An enclosed area for the toilet and bidet offers maximum privacy.



First Floor

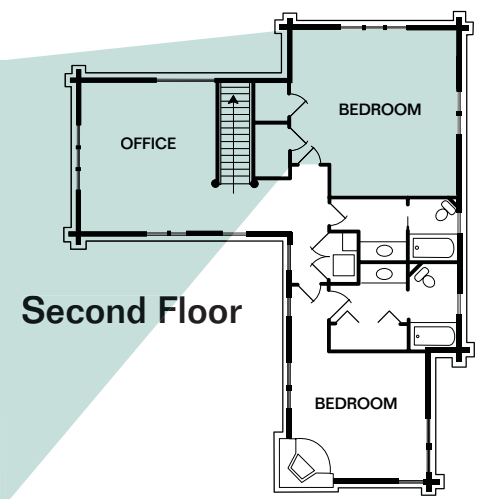


Basement

Kids' Bunkroom



Designed to accommodate the homeowners' grandchildren, the bunkroom has doors underneath the window leading to a storage space, which the children use as a playroom hideout. The drop-height ceiling has the appearance of being added on in the tradition of old farmhouses. White board-and-batten walls and ceilings complement the open white pine rafters, as do the custom shutters. For more on these and other types of window treatments, check out our Décor story on page 66.



Second Floor