



LOG, TIMBER & HYBRID HOMES
NATIONWIDE SINCE 1976

WISCONSINLOGHOMES.COM

FOCUS ON DESIGN | WLH E-NEWSLETTER

1-800-678-9107 INFO@WISCONSINLOGHOMES.COM



THE ROSE WILD ESTATE II

TOTAL SQUARE FOOTAGE: 11,920
FIRST FLOOR: 5,290 SQ. FT.
SECOND FLOOR: 2,100 SQ. FT.
LOWER LEVEL: 4,530 SQ. FT.

Exquisite design meets sophisticated style! Maximizing every square inch, the first floor of the Rose Wild Estate II boasts an exceptional floor plan designed for entertaining guests as well as comfortable day-to-day living. The kitchen offers a casual dining space and creatively connects to the formal dining room through a handy butler's pantry. A secluded sanctuary, the primary bedroom suite is luxurious and spacious with a sitting room with fireplace, private porch access, and a large spa-style bathroom. Five additional bedroom suites are located throughout the upper and lower levels. A bar, game room, wine room, theater, and full-size gym in the walk-out make this the perfect place to entertain.

[VIEW FLOOR PLAN & DESIGN DETAILS](#)

CUSTOM LOG, TIMBER & HYBRID HOMES - NATIONAL DESIGN & BUILD SERVICES - FAMILY OWNED SINCE 1976

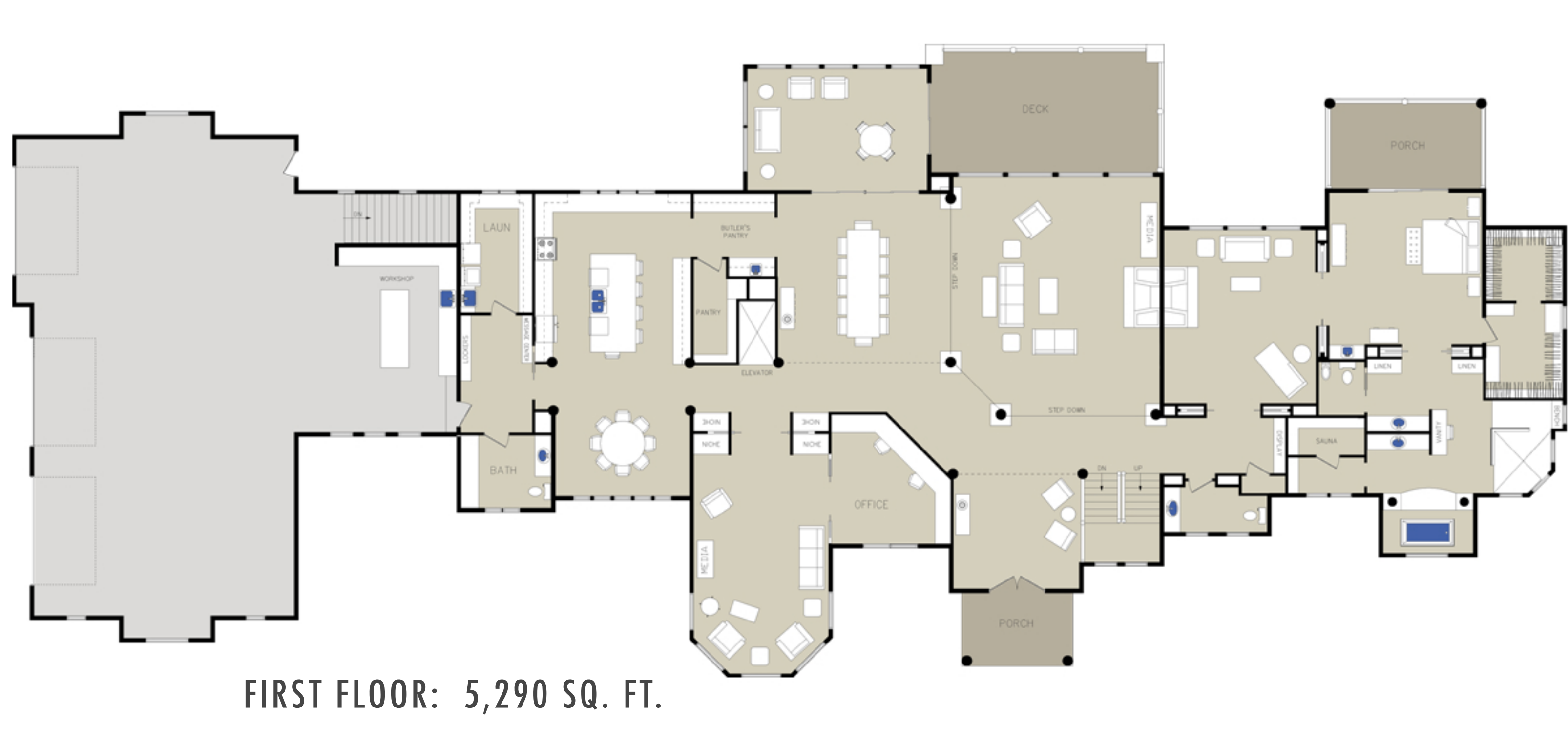
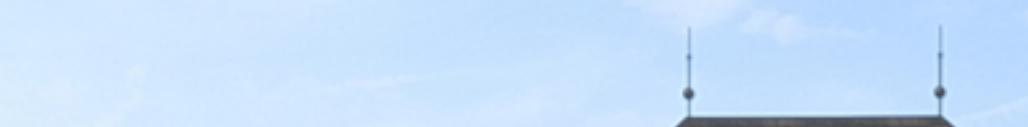


[CLICK HERE FOR EXTERIOR RENDERING VIDEO TOUR](#)

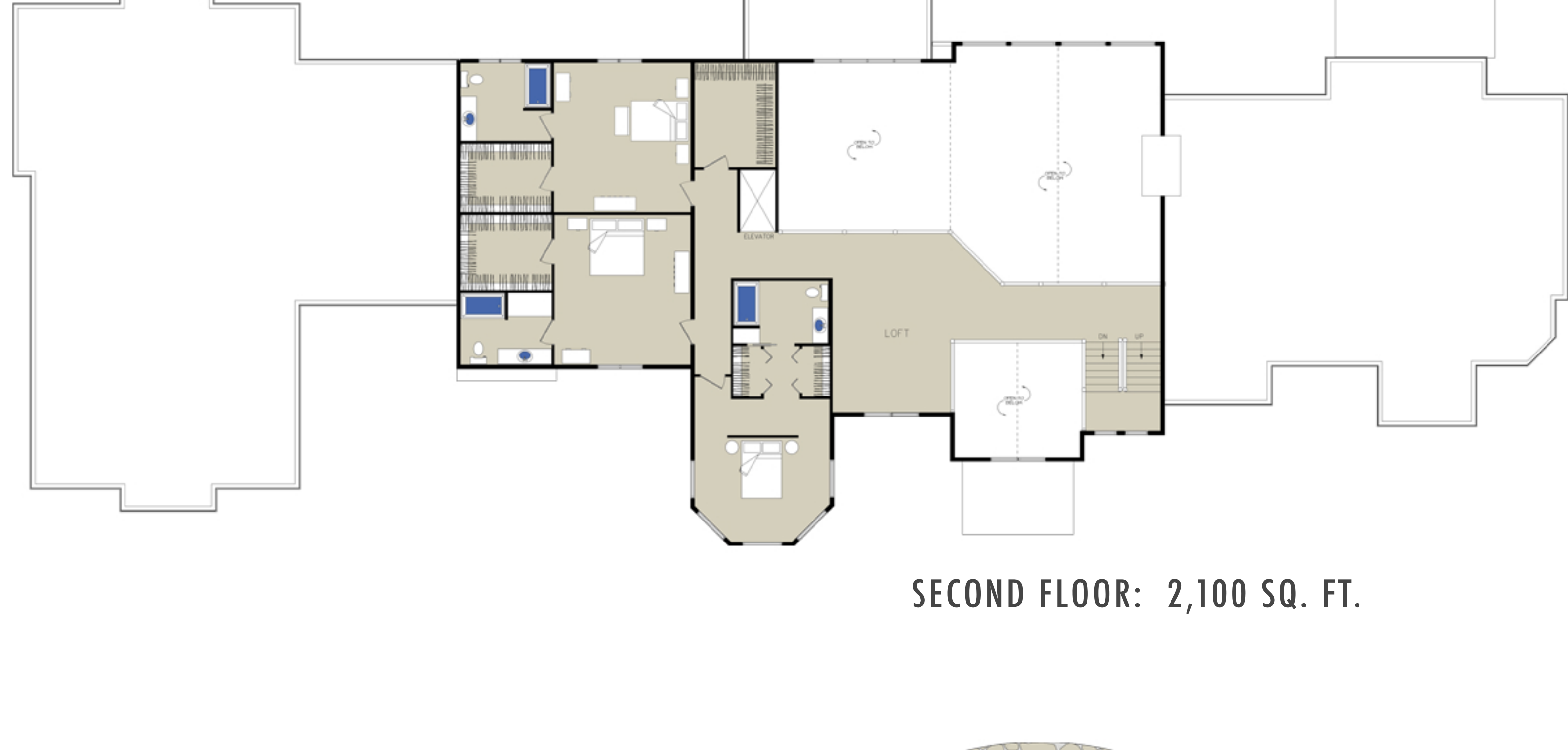
OUR CUSTOM DESIGNS ARE SIMPLY MEANT TO INSPIRE YOUR DREAM HOME VISIONS. MODIFY THIS PLAN IN SIZE, LAYOUT AND STYLE TO FIT YOUR PERSONAL NEEDS AND PROPERTY, OR START COMPLETELY FROM SCRATCH ON A NEW DESIGN.

STAY CONNECTED WITH US TO EXPERIENCE THE ART OF DESIGN FREEDOM[®]

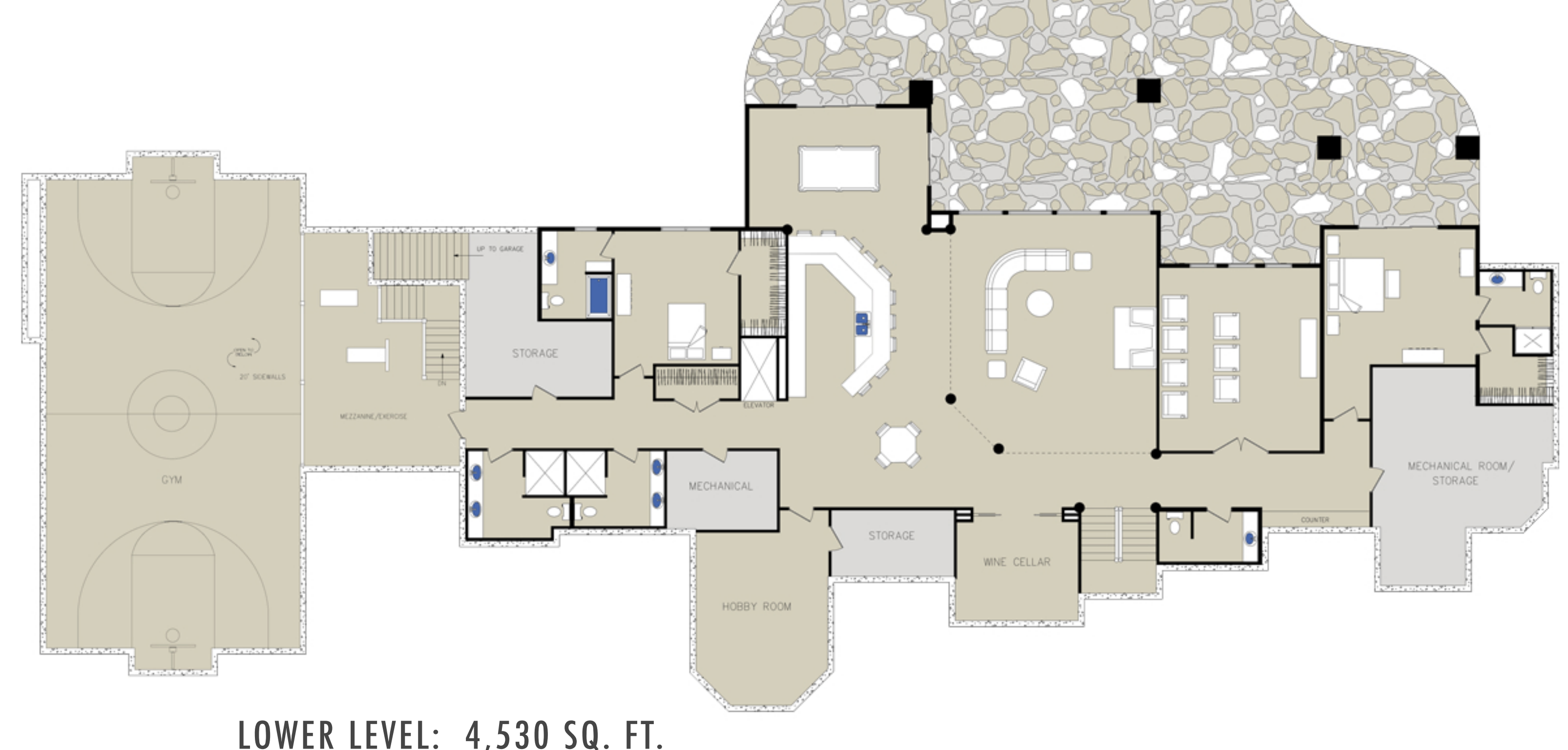
FOLLOW US ON SOCIAL NETWORKS TO GET THE LATEST PHOTOS FROM OUR CURRENT PROJECTS!



FIRST FLOOR: 5,290 SQ. FT.



SECOND FLOOR: 2,100 SQ. FT.

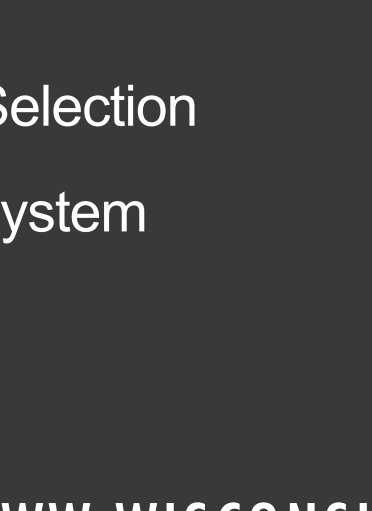


LOWER LEVEL: 4,530 SQ. FT.

ORDER & DOWNLOAD PLANNING INFORMATION

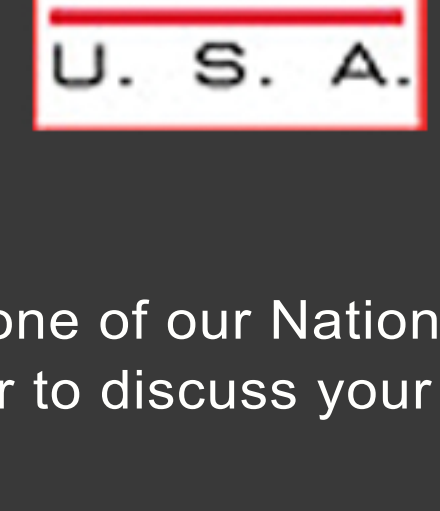
- Planning Guide (Pay Shipping Fee Only)
- Digital Brochure (Free Download)
- Interior Design & Décor Guide (Free Download)
- Take our Custom Wood Home Survey

[ORDER & DOWNLOAD NOW](#)



NATIONAL LOG, TIMBER FRAME & HYBRID STYLE HOMES

- Distinctive Log, Timber & Hybrid Product Selection
- Custom Architectural Planning & Design
- Energy Efficient Thermal-Log™ Building System
- Turn-Key Construction Services Available
- On-Site & In-House Design Consultations
- Full Service Interior Design & Décor



LOG ON TO WWW.WISCONSINLOGHOMES.COM FOR

- Custom Floor Plans
- Featured Home Projects
- Photo Galleries
- Log & Timber Home Blog
- Video Tours
- Magazine Articles & Stories

Email one of our National Home Consultants or call 1.800.678.9107 with any questions you have or to discuss your custom wood home project.