

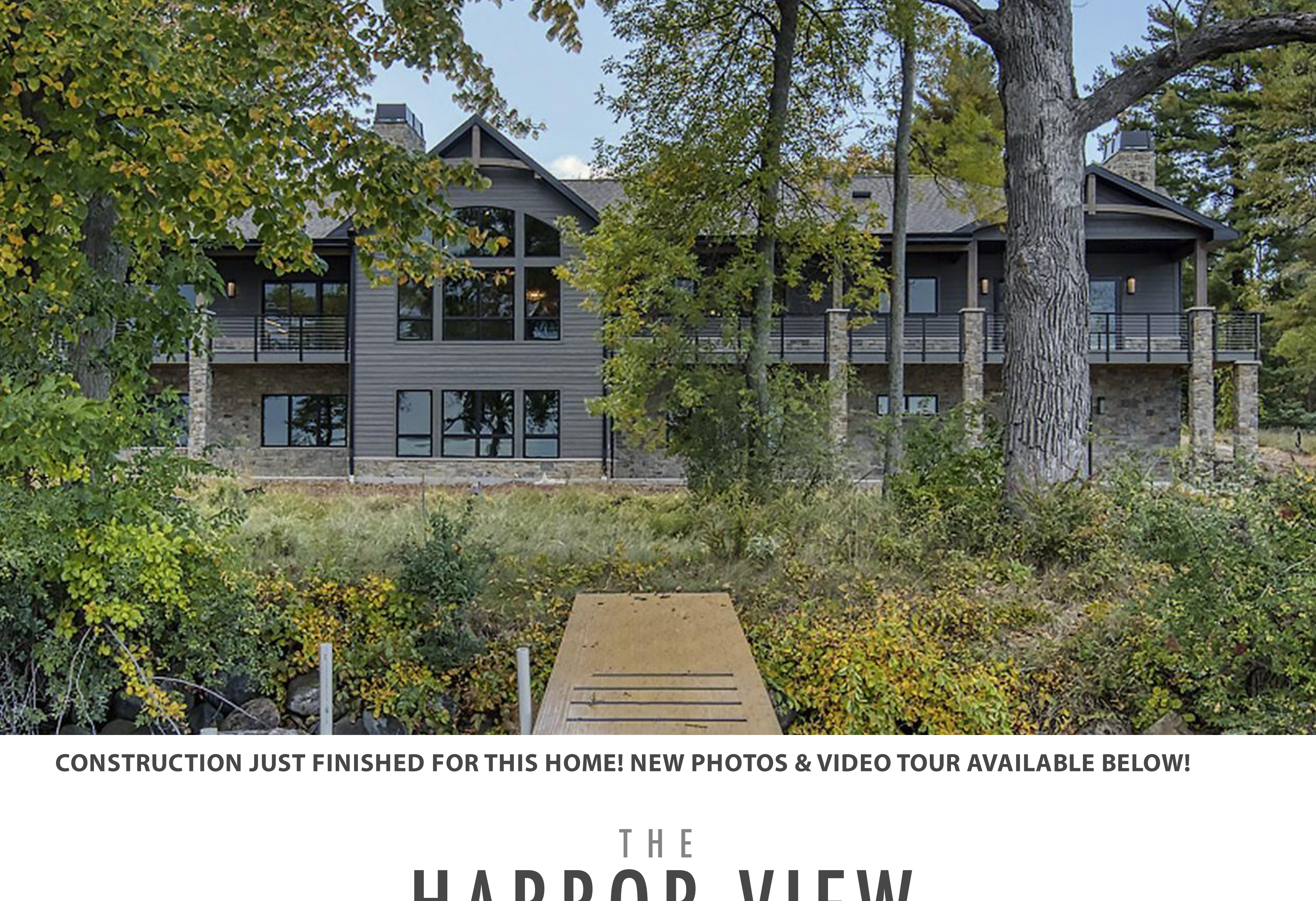


LOG, TIMBER & HYBRID HOMES
NATIONWIDE SINCE 1976

WISCONSINLOGHOMES.COM

FOCUS ON DESIGN | WLH E-NEWSLETTER

1-800-678-9107 INFO@WISCONSINLOGHOMES.COM



CONSTRUCTION JUST FINISHED FOR THIS HOME! NEW PHOTOS & VIDEO TOUR AVAILABLE BELOW!

THE HARBOR VIEW

TOTAL SQUARE FOOTAGE: 6,346

FIRST FLOOR: 3,839 SQ. FT.

LOWER LEVEL: 2,507 SQ. FT.

A dream layout for a primary residence or family retreat home, the Harbor View incorporates the finest amenities to accommodate large gatherings or everyday life on the water. The large kitchen is every homeowner's dream with abundant work and serving spaces, including a wet bar and formal walk-through pantry/serving station along with connecting private storage pantry. A cozy sunroom off the kitchen provides quiet space to relax and take in nature's views and connects to the spectacular outdoor kitchen. A spacious primary bedroom suite sits in its own wing of the main level, along with a private office. The finished lower level features a secondary living room, bar, three additional bedrooms and lots of storage!

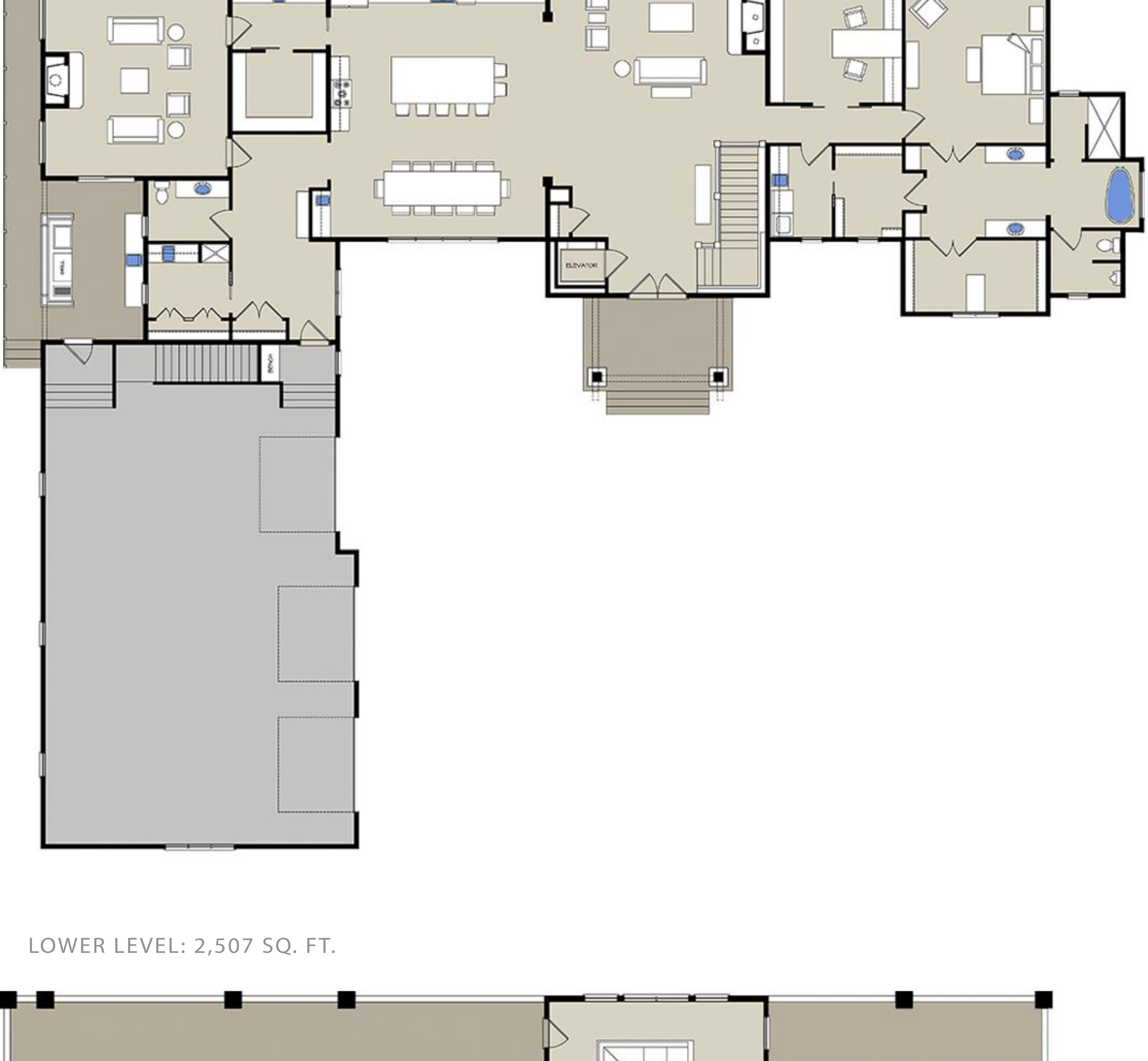
CUSTOM LOG, TIMBER & HYBRID HOMES - NATIONAL DESIGN & BUILD SERVICES - FAMILY OWNED SINCE 1976



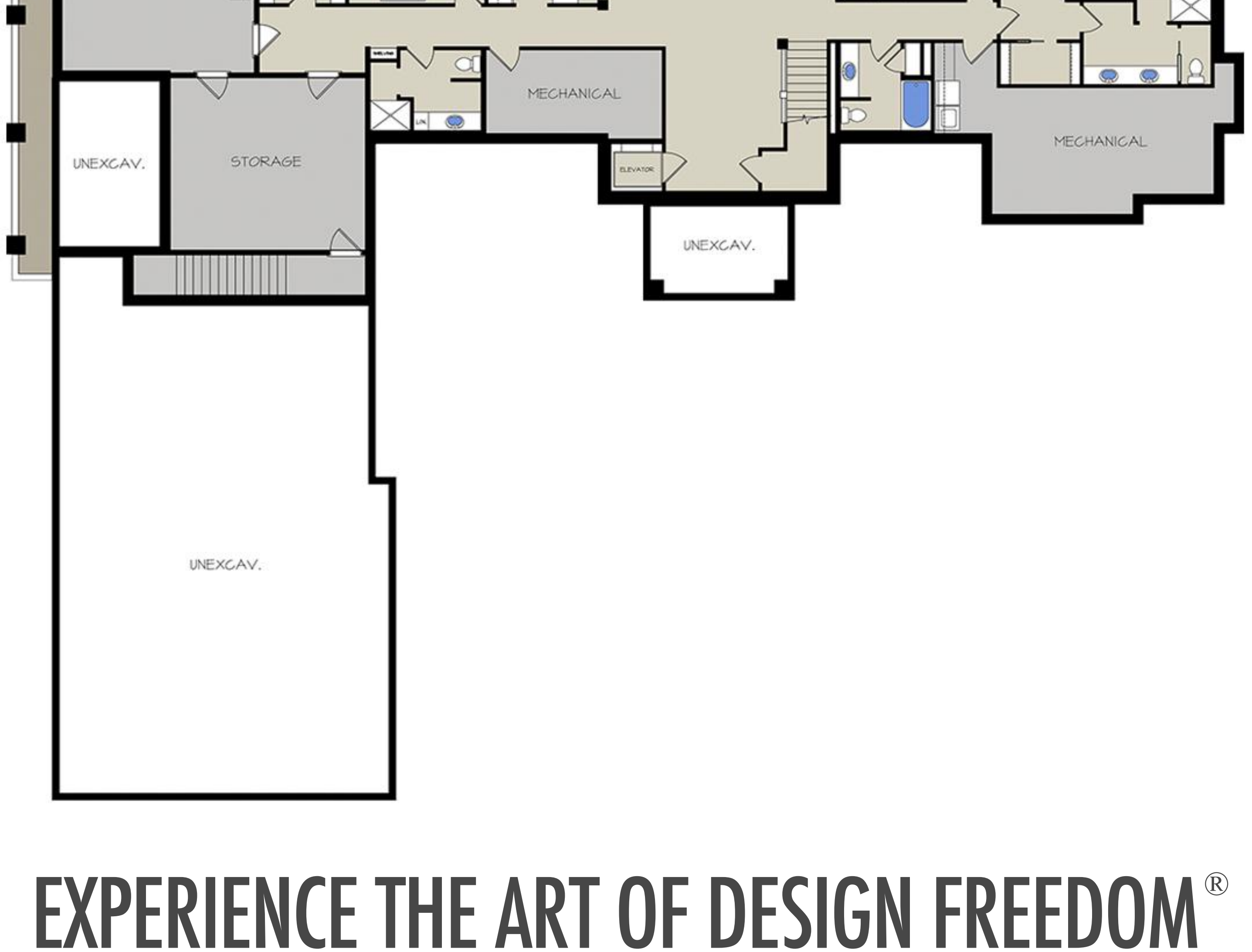
OUR CUSTOM DESIGNS ARE SIMPLY MEANT TO INSPIRE YOUR DREAM HOME VISIONS. MODIFY THIS PLAN IN SIZE, LAYOUT AND STYLE TO FIT YOUR PERSONAL NEEDS AND PROPERTY, OR START COMPLETELY FROM SCRATCH ON A NEW DESIGN.

[VIEW FLOOR PLAN & DESIGN DETAILS](#)

FIRST LEVEL: 3,839 SQ. FT.



LOWER LEVEL: 2,507 SQ. FT.



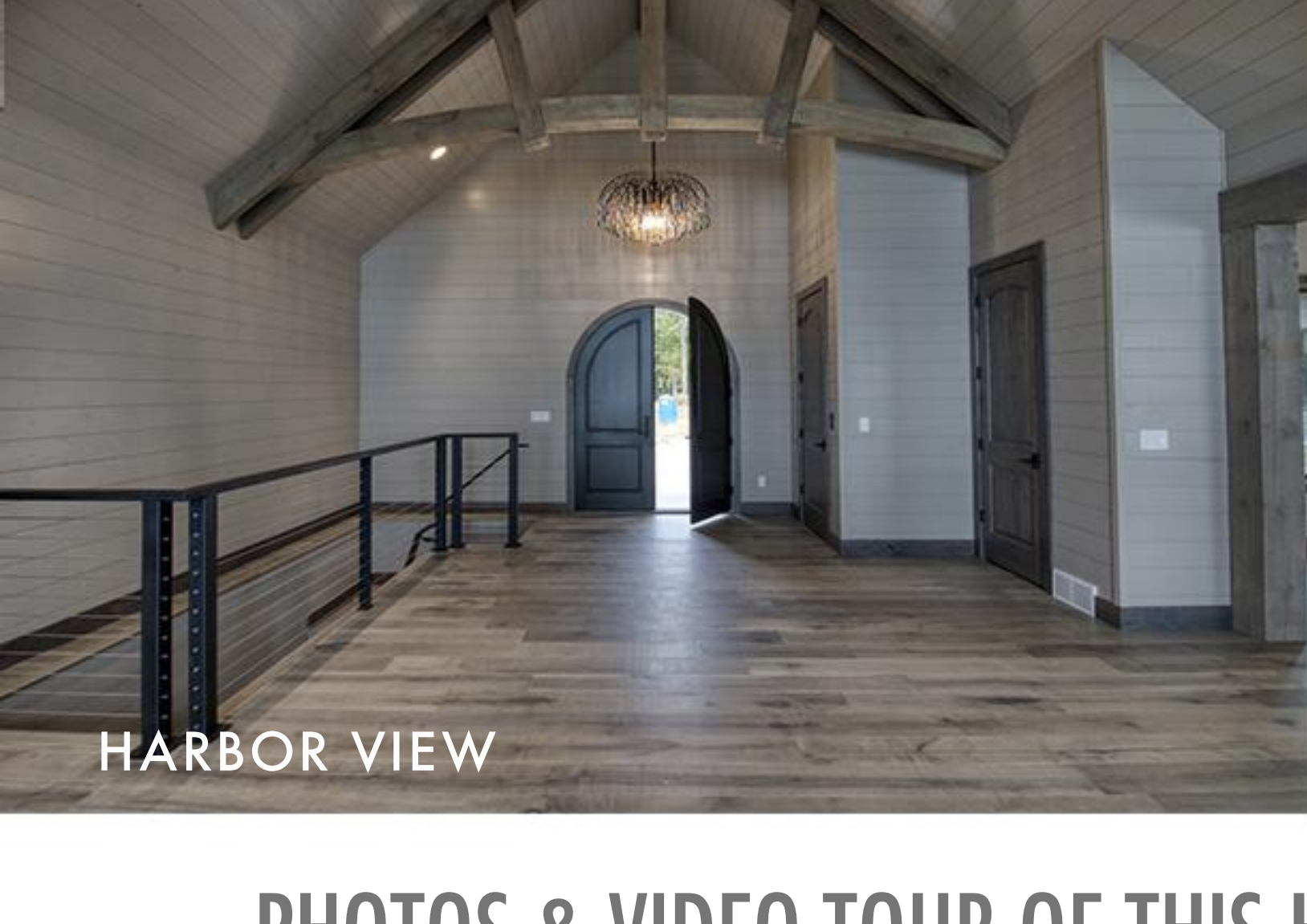
EXPERIENCE THE ART OF DESIGN FREEDOM[®]



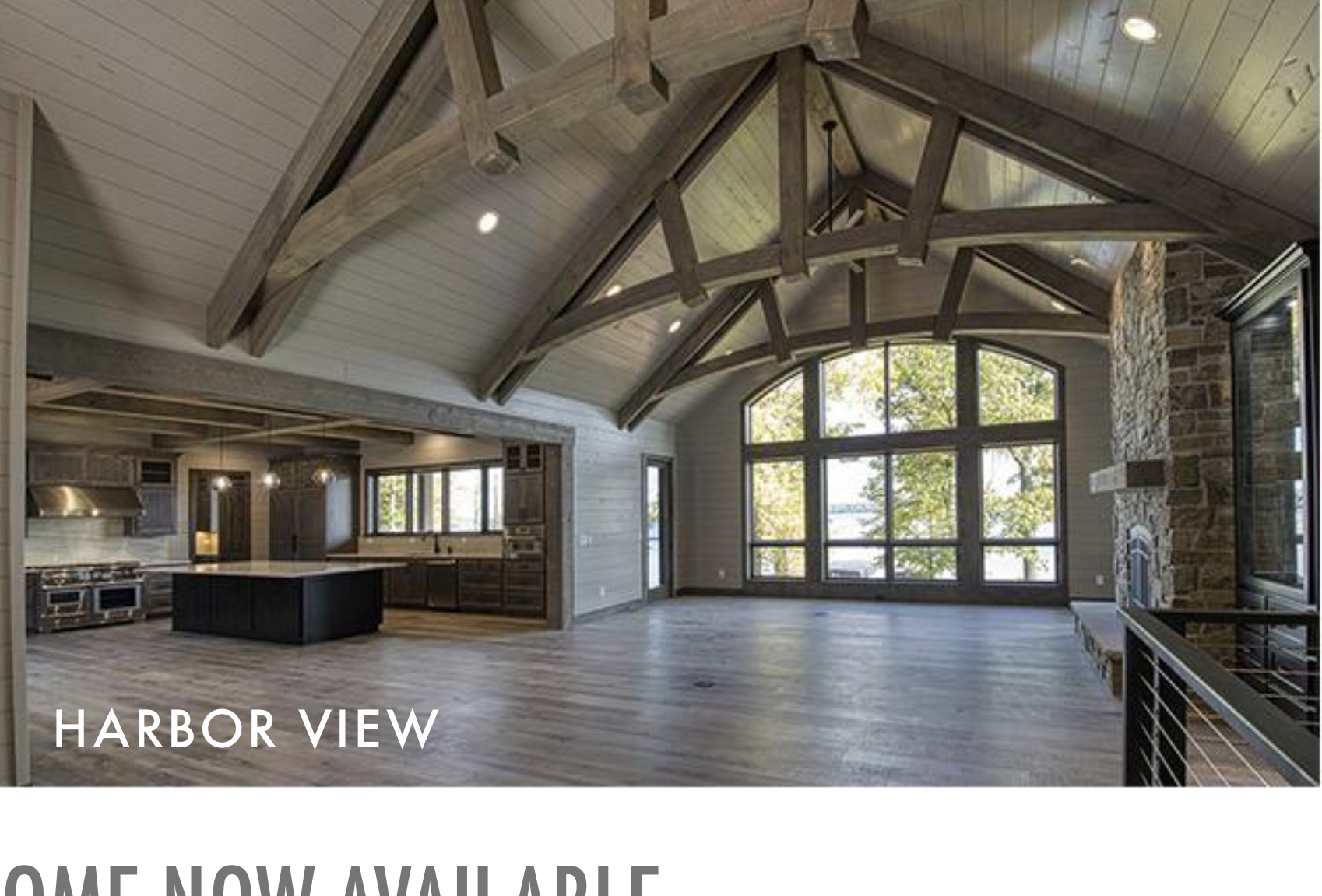
STAY CONNECTED WITH US. FOLLOW US ON SOCIAL NETWORKS TO GET THE LATEST PHOTOS FROM OUR CURRENT PROJECTS!



HARBOR VIEW



HARBOR VIEW



HARBOR VIEW

PHOTOS & VIDEO TOUR OF THIS HOME NOW AVAILABLE

Construction for this beautiful Lake House, designed & built by our team, was completed last month! New photos and video tour are now available from final construction walk-through.

[CLICK HERE TO VIEW START-TO-FINISH PHOTOS](#)

[CLICK HERE TO WATCH VIDEO TOUR](#)



TO GIVE OUR TEAM TIME TO SPEND WITH THEIR FAMILIES FOR THE HOLIDAYS, OUR OFFICE WILL BE CLOSED THE FOLLOWING DATES:

**NOVEMBER 26 - 27
DECEMBER 24 - 29
JANUARY 1**

**HAPPY HOLIDAYS FROM OUR HOME TO YOURS!
WISHING YOU A HOLIDAY SEASON & NEW YEAR THAT'S FILLED WITH PEACE, LOVE, GOOD HEALTH, AND ABOVE ALL, JOY IN ITS TRUEST AND PUREST FORM.**

**BEST WISHES & HOLIDAY BLESSINGS,
ALL OF US AT WISCONSIN LOG HOMES**

ORDER & DOWNLOAD PLANNING INFORMATION

- Planning Guide (Pay Shipping Fee Only)
- Digital Brochure (Free Download)
- Interior Design & Décor Guide (Free Download)
- Take our Custom Wood Home Survey

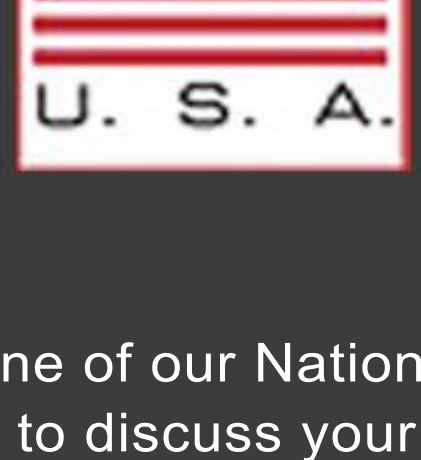
[ORDER & DOWNLOAD NOW](#)



LOG, TIMBER & HYBRID HOMES
NATIONWIDE SINCE 1976

NATIONAL LOG, TIMBER FRAME & HYBRID STYLE HOMES

- Distinctive Log, Timber & Hybrid Product Selection
- Energy Efficient Thermal-Log™ Building System
- On-Site & In-House Design Consultations
- Custom Architectural Planning & Design
- Turn-Key Construction Services Available
- Full Service Interior Design & Décor



LOG ON TO WWW.WISCONSINLOGHOMES.COM FOR

- Custom Floor Plans
- Photo Galleries
- Video Tours
- Featured Home Projects
- Log & Timber Home Blog
- Magazine Articles & Stories

Email one of our National Home Consultants or call 1.800.678.9107 with any questions you have or to discuss your custom wood home project.