



LOG, TIMBER & HYBRID HOMES
NATIONWIDE SINCE 1976

WISCONSINLOGHOMES.COM

FOCUS ON DESIGN | WLH E-NEWSLETTER

1-800-678-9107 INFO@WISCONSINLOGHOMES.COM



THE HIGH TIMBER RANCH

TOTAL SQUARE FOOTAGE: 3,555

FIRST FLOOR: 3,555 SQ. FT.

This sprawling ranch features an open kitchen, dining, and great room layout with access to the canopy porch and patio. The primary bedroom suite is tucked in its own wing of the home while two additional bedrooms with attached bathrooms are privately located off the mudroom in the opposite wing.

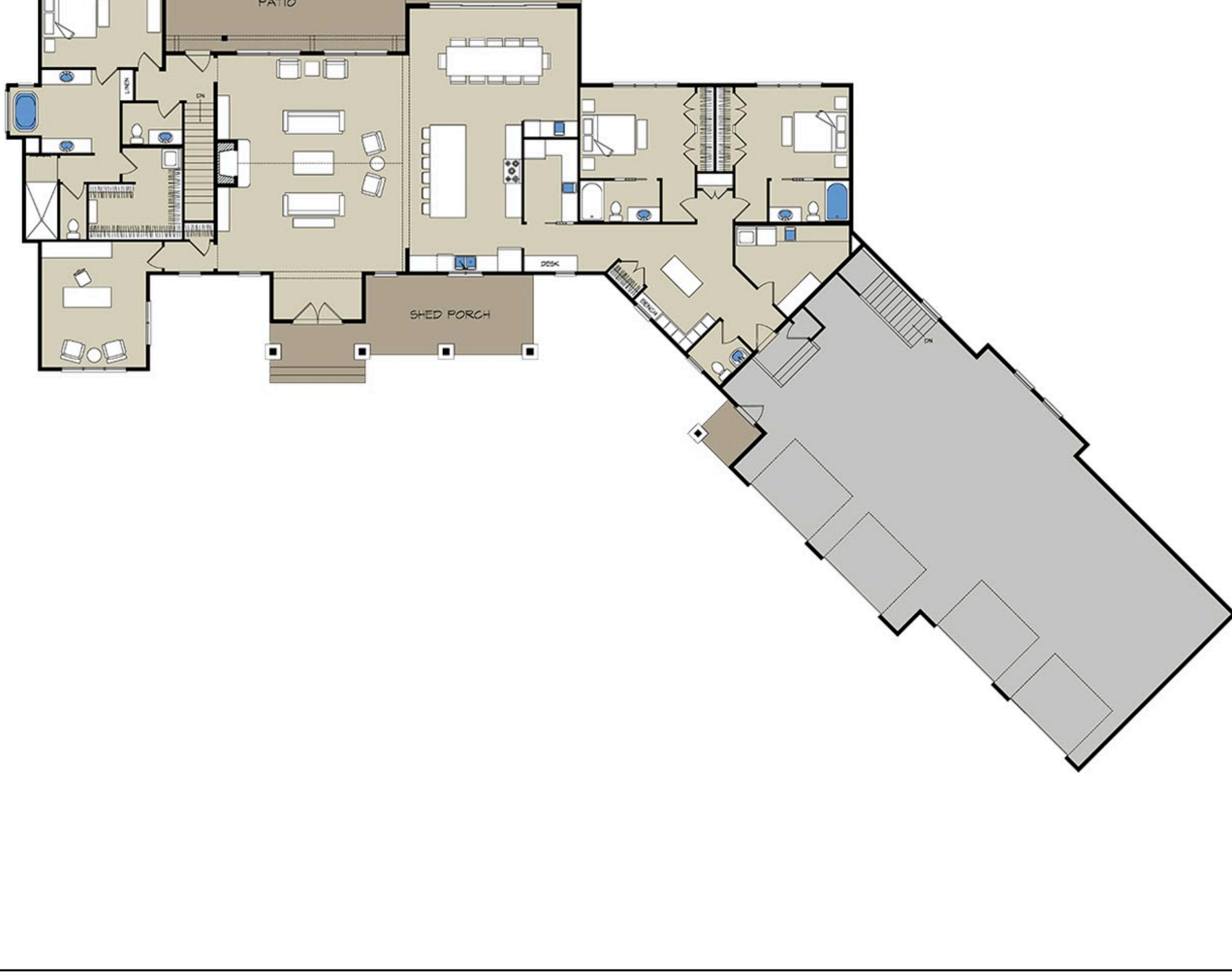
CUSTOM LOG, TIMBER & HYBRID HOMES - NATIONAL DESIGN & BUILD SERVICES - FAMILY OWNED SINCE 1976



OUR CUSTOM DESIGNS ARE SIMPLY MEANT TO INSPIRE YOUR DREAM HOME VISIONS. MODIFY THIS PLAN IN SIZE, LAYOUT AND STYLE TO FIT YOUR PERSONAL NEEDS AND PROPERTY, OR START COMPLETELY FROM SCRATCH ON A NEW DESIGN.

[VIEW FLOOR PLAN & DESIGN DETAILS](#)

FIRST LEVEL: 3,555 SQ. FT.



FINAL CONSTRUCTION PHOTOS OF THIS RECENTLY COMPLETED CABIN DESIGNED & BUILT BY WISCONSIN LOG HOMES

[VIEW START-TO-FINISH CONSTRUCTION PHOTOS](#)



**FLOOR PLAN & VIDEO TOUR COMING SOON!
FOLLOW US ON FACEBOOK & INSTAGRAM!**

STAY CONNECTED WITH US TO EXPERIENCE THE ART OF DESIGN FREEDOM[®]

FOLLOW US ON SOCIAL NETWORKS TO GET THE LATEST PHOTOS FROM OUR CURRENT PROJECTS!



LOG OIL SALE

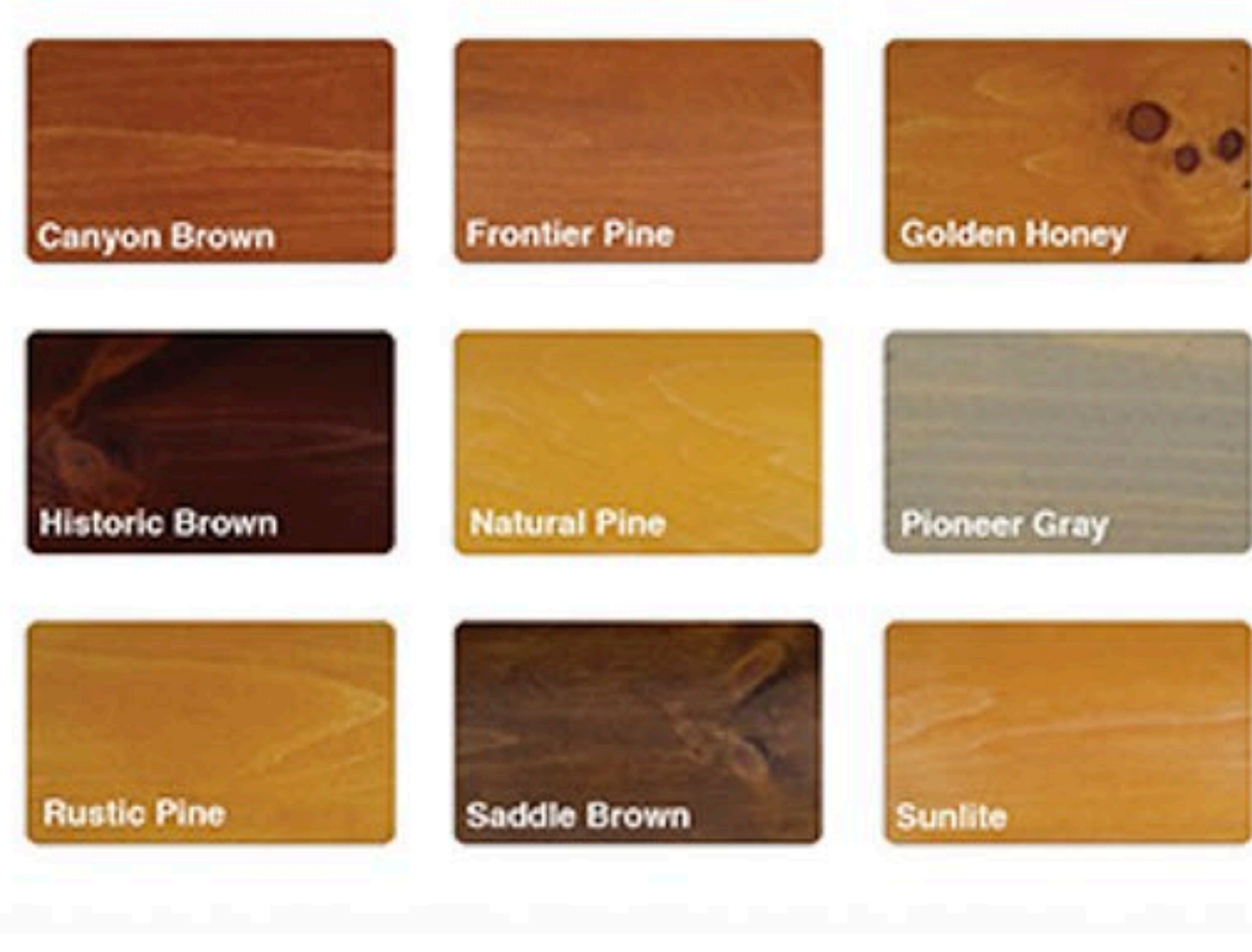
MAY 3 - JUNE 30, 2021

WEATHERSEAL PRICING:

Retail Price: \$293 (per 5-gallon pail)

Sale Price: \$263 (per 5-gallon pail)

CLASSICS Color Collection



TRANSLUCENT Color Collection



- Exclusive offer valid May 3 – June 30, 2021.
- Please expect 1-2 weeks after your order is placed to receive your log oil due to shipping time.
- Offer available while supplies last.

CALL 1-800-678-9107 TO PLACE YOUR ORDER!

WEATHERSEAL[™]

PREMIUM EXTERIOR WOOD STAIN & SEALANT

WeatherSeal[™] Premium Exterior Wood Stain & Sealant is the standard by which all other exterior wood treatments are measured. Suitable for use on nearly all types of outdoor wood surfaces, WeatherSeal elements in one easy-to-apply, long-lasting formula. WeatherSeal's unique "dripless" consistency cuts down on waste, prevents pigment settling so you stir less, and spreads silky smooth for even color and unmatched performance.

FEATURES & BENEFITS

- Thick, rich consistency
- "Dripless" formula limits pigment settling & minimizes mixing mess
- Naturally-derived, plant-based oils outperform less-effective water-based products
- Formula can be diluted with mineral spirits & sprayed
- Fast-drying formula penetrates quickly with re-coating possible in 4 hours or less
- Available in wide range of colors
- Long-lasting for up to 5 years of worry-free protection
- LowVOCs mean less odor

Call 1-800-678-9107 to place your WeatherSeal order!

ORDER & DOWNLOAD PLANNING INFORMATION

- Planning Guide (Pay Shipping Fee Only)
- Digital Brochure (Free Download)
- Interior Design & Décor Guide (Free Download)
- Take our Custom Wood Home Survey

[ORDER & DOWNLOAD NOW](#)



LOG, TIMBER & HYBRID HOMES
NATIONWIDE SINCE 1976

NATIONAL LOG, TIMBER FRAME & HYBRID STYLE HOMES

- Distinctive Log, Timber & Hybrid Product Selection
- Energy Efficient Thermal-Log[™] Building System
- On-Site & In-House Design Consultations
- Custom Architectural Planning & Design
- Turn-Key Construction Services Available
- Full Service Interior Design & Décor



LOG ON TO WWW.WISCONSINLOGHOMES.COM FOR

- Custom Floor Plans
- Photo Galleries
- Video Tours
- Featured Home Projects
- Log & Timber Home Blog
- Magazine Articles & Stories

Email one of our National Home Consultants or call 1.800.678.9107 with any questions you have or to discuss your custom wood home project.