

A couple seeks a getaway that can later be a primary home.



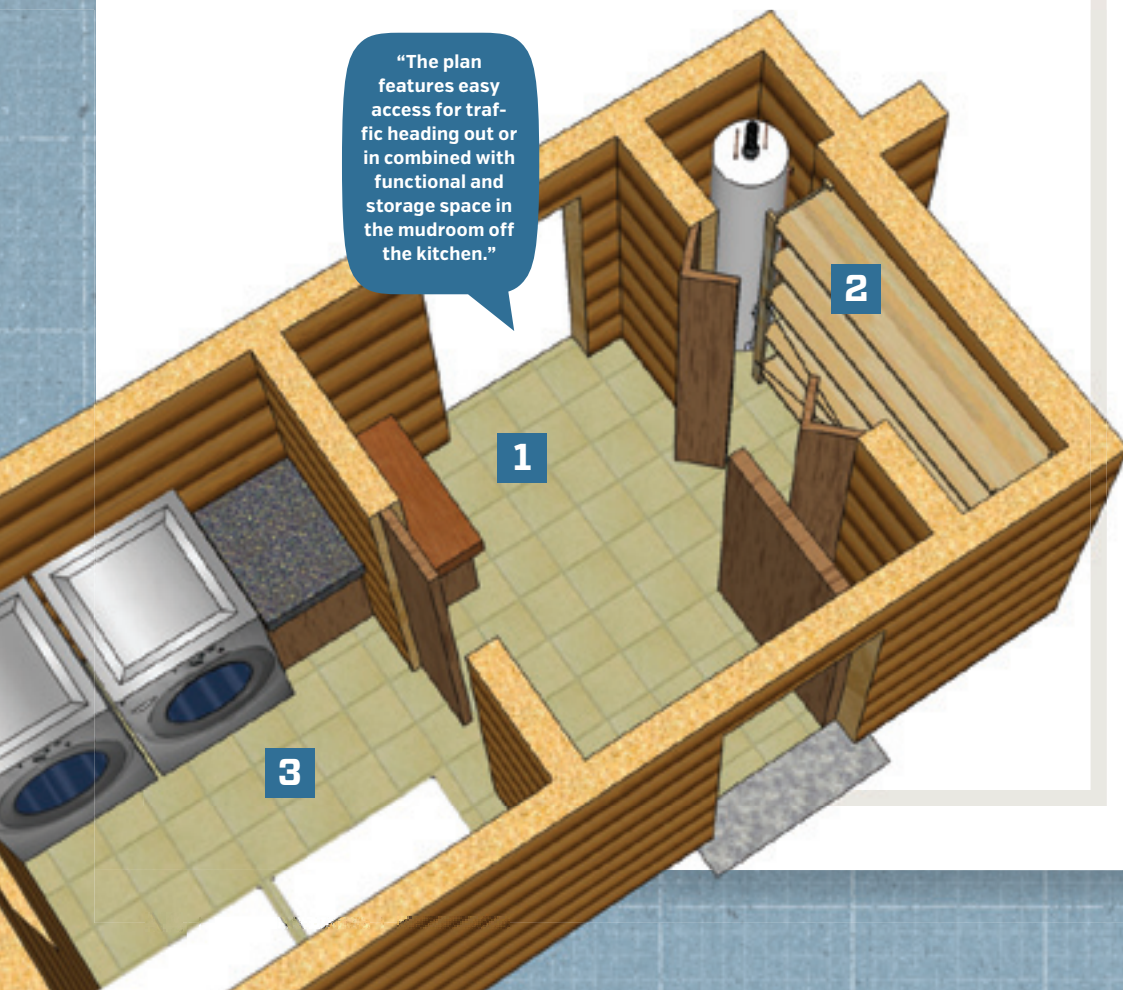
William and Tish



The Inside Scoop

Even the roomiest home can benefit from strategic grouping of chore functions. The trick is to arrange different areas so that they remain distinct but don't take up lots of room altogether.

- 1** The mudroom linking the kitchen and garage (or the outdoors beyond the garage) provides a broad bench for removing muddy shoes or putting on boots, or as a staging area for unloading groceries.
- 2** Shelving in the enclosed space for the water heater can be used for storage or even as a place to dry clothing.
- 3** Providing room for side-by-side washer and dryer makes access easy, especially for servicing each one separately. It's also important to have plenty of room for folding clothes fresh from the dryer.



"The plan features easy access for traffic heading out or in combined with functional and storage space in the mudroom off the kitchen."

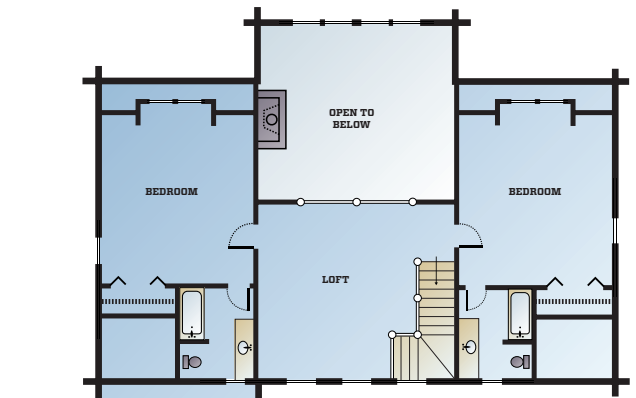
Looking ahead to retirement, William and Tish Vaughan want a plan that allows them to relax and enjoy their home, but also is equipped to handle multiple visitors for when their three sons grow up and begin to bring their own families to stay. Large entertainment spaces – i.e., the kitchen – were key to their design, as were varied sleeping areas, including a bonus space above the garage. The design team at Green Bay-based Wisconsin Log Homes took on that challenge. Here are the ideas that they came up with.

Why a log home: "We love the look of a rustic, open plan, and our property setting is perfect for a log home," Tish says.

Most important rooms: "For the main living area, a large, open kitchen with an island and/or eat-at bar, casual dining room and a great room, with a fireplace, overlooking the backyard. For sleeping accommodations, a main-level master bedroom, two bedrooms and one or two baths upstairs, and a loft area. Also, an attached garage, preferably with a bonus area over it for a bunk room and/or storage."

The Lowdown

"The energy-efficient, low-maintenance home utilizes our Thermal-Log Building System and features an open concept with comfortable indoor and outdoor living spaces – something very important to the future homeowners. Designed for convenient living and entertaining, the spacious kitchen flows efficiently into the window-filled great room, dining area, screened-in porch and outdoor patio. William and Tish had specific requests in mind for the master suite, and we were able to accommodate them all, including a secluded patio, to create a private space the couple will enjoy for years to come."



Upper Level

The couple took advantage of every nook and cranny for extra storage, including the space above the garage.

PLAN SPECS

Square Footage: 3,056
Bedrooms: 3 **Baths:** 3.5



Main Level

"The master suite is privately placed in its own wing and offers a secluded patio and luxury bath."

MORE PLANS

Browse floor plans of all shapes and sizes in our growing collection of online floor plans.
www.loghome.com/floorplans