

A HOME BUYER SPECIAL

DREAM HOME SHOWCASE

CUSTOM • HYBRID • LOG • TIMBER

DREAM IT, LIVE IT

DESIGN YOUR
PERFECT HOME

SPECIAL FLOOR PLAN SECTION
ALL SIZES, ALL BUDGETS

A large, rustic log cabin with a stone chimney and a hot tub in the foreground, overlooking a mountain landscape. The cabin features a wide wooden deck with a stone railing and a hot tub. The background shows a vast mountain range under a clear blue sky.



Massive timbers and flared stone pillars anchor the house to its site and add texture against hand-peeled logs. An impressive canopy shelters the sprawling deck and expands living space to the outdoors.

OPPOSITE: A sophisticated combination of prairie gray logs, brick red windows, and dry-stacked stone provide a natural, yet distinctive look for this hybrid masterpiece in Ohio.

A Resort Home

Wisconsin Log Homes creates a hybrid sanctuary for an Ohio family.

Photos by KCJ Studios

When it came time to build a home, Paul and Debbie longed for logs—and a peaceful, comfortable place to raise their two children. “We always loved the look of a rustic home,” Paul says. “The mix of stone and wood creates a warm and inviting atmosphere and was something we wanted to be surrounded by every day.”

Paul and Debbie found a gorgeous piece of property, not far from work and school, that perfectly suited their log home dream. The 40 acres of Ohio land overlook calming waterfalls flowing into a sprawling pond, which is home to swans and wild ducks. “We are definitely able to enjoy the beauty of God’s creation in our backyard,” Debbie explains. “We see deer, turkeys, foxes and we even hear coyotes at night.”





ABOVE: Andean Walnut double doors open to the entryway, which features broken limestone set in hardwood on the floors, vintage candle-style lighting and warm wood accents.

OPPOSITE: A grand window wall lined with timbers and a rough stone fireplace are focal points in the great room. Deep sofas and a patterned rug bring softness to the wood-filled space.

The couple trusted Wisconsin Log Homes, a national log and timber frame company, to design a home that would fit their family now and in the future. “We were impressed with the hybrid and energy-efficient options that Wisconsin Log Homes had to offer, and liked the idea of having logs and stone on the outside and the timber frame style inside,” Paul says.

Each space throughout this custom design was carefully planned. “With our hybrid building system, our clients can virtually start with a blank canvas and use the building materials of their choice wherever they wish to create the style they are seeking,” says Ehren Graf, national home consultant at Wisconsin Log Homes. Paul and Debbie worked with both Wisconsin Log Homes’ design team and Rita Santon of Coventry Lighting and Design Center in Canfield, Ohio, to make each room rich in detail and functionality.

Since the family entertains often, creating openness throughout the great room and kitchen areas was a priority. The kitchen provides abundant bar-style seating and is conveniently placed between the dining and sunroom, resulting in an ideal setting for larger gatherings.

“The great room is a favorite space among our visitors,” Paul says. Guests say the room, with its timbers and glass wall overlooking the view, reminds them of a resort. Knowing the great room would be the center of attention, Paul and Debbie turned to Mullet Cabinets of Millersburg, Ohio, to create something special for their fireplace. Mullet handcrafted two mantels in an Old World style to enhance the character of the timbers and beams throughout the room.

“Living here is like living at a tranquil resort full-time. From the minute you drive up, you can feel a sense of calm and relaxation after a hectic day,” Paul says.





Wood and granite countertops accent the kitchen's distressed alder and red cabinetry. Hand-blown glass pendants hang from the coffered-style ceiling, adding design depth to this eclectic space.

OPPOSITE: Massive trusses above and a spectacular view beyond make the loft space a personal favorite of the homeowners. Black wrought-iron spindles complement the surrounding timbers and stone.



**WISCONSIN
LOG HOMES**
TAKING YOU HOME, NATURALLY.
SINCE 1976

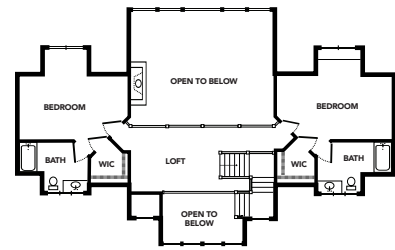
800-844-7974
www.wisconsinloghomes.com
email: info@wisconsinloghomes.com

SEE THIS FLOOR PLAN FEATURED ON PAGE 90.

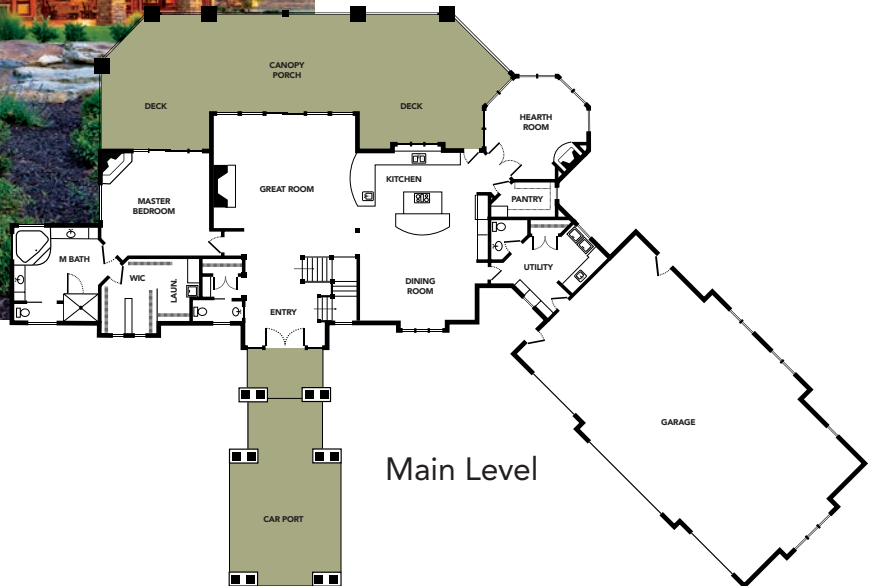
FLOOR PLANS



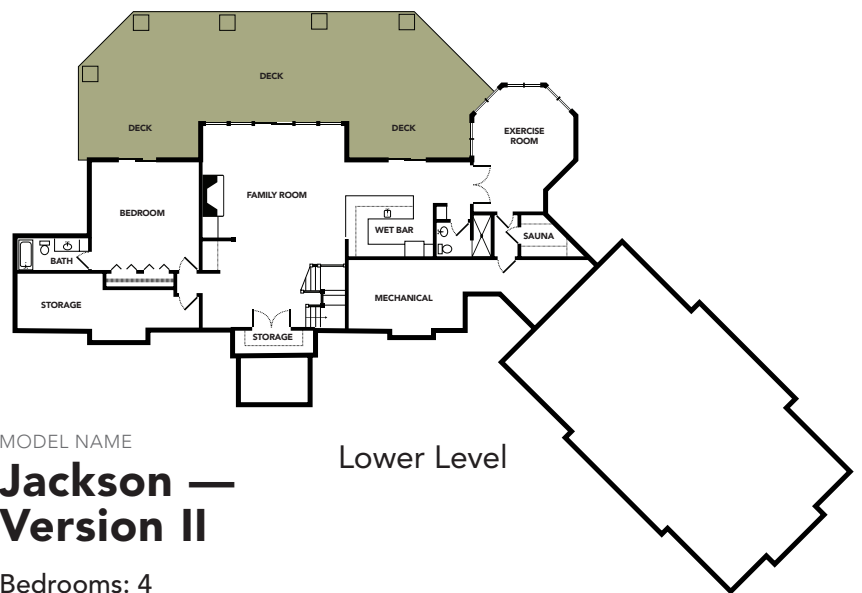
For a photographic tour of this home, see page 12.



Upper Level



Main Level



Lower Level



WISCONSIN LOG HOMES
 TAKING YOU HOME, NATURALLY.
 SINCE 1976

800-844-7974
 www.WisconsinLogHomes.com
 email: info@WisconsinLogHomes.com

MODEL NAME

Jackson — Version II

Bedrooms: 4
 Baths: 5 full, 2 half
 Square Footage: 5,808

