

focus on design

ARCHITECTURAL DESIGN - LOG & TIMBER HOMES - CONSTRUCTION - INTERIOR DESIGN & DECOR
WITH WISCONSIN LOG HOMES

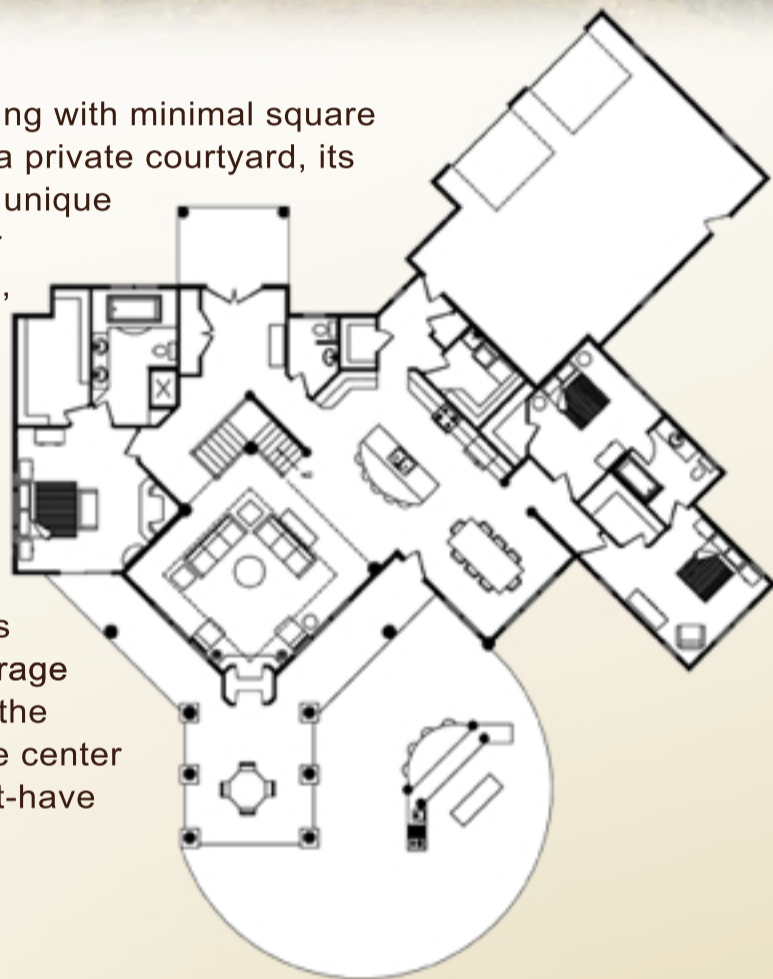


Whistler View

First Floor: 2,460

Total Square Footage: 2,460

The Whistler View offers upscale living with minimal square footage. Strategically folded around a private courtyard, its distinctive lines enhance the home's unique architecture. The full-service outdoor kitchen features a double island, grill, prep sink, and rustic pergola. This mountain ranch also boasts strategically-placed transoms and high performance windows to maximize natural light, a double-sided fireplace to connect indoor and outdoor spaces, a secluded master suite, two bedrooms with a shared bath, and plenty of storage space including a service counter in the kitchen that can be a useful message center and charging station for today's must-have personal electronics.



Click here for

Video tour

VIDEO TOUR of
Dave & Kathy Janczak's
Log Home
(founders/owners of
Wisconsin Log Homes)

National Design & Build Services

- Distinctive Log & Timber Product Selection
- Custom Architectural Design
- Custom Cabinetry Design & Provider
- High Performance Building System
- Interior Design & Décor
- National Construction Services

Call 1-800-678-9107 or e-mail info@wisconsinloghomes.com and one of our home consultants can answer any questions you might have or help you get started with your new home design today.

We'll be at Log & Timber Home Shows throughout the world in 2008.
For our events schedule, [CLICK HERE.](#)



Taking You Home, Naturally.
Since 1976

Thank You,

From your friends at Wisconsin Log Homes

If you have questions or want to send us feedback, please email Stephanie or call 1-800-678-9107.

For video of our custom homes, log on to: www.wisconsinloghomes.com