

focus on design

ARCHITECTURAL DESIGN - LOG & TIMBER HOMES - CONSTRUCTION - INTERIOR DESIGN & DECOR
WITH WISCONSIN LOG HOMES



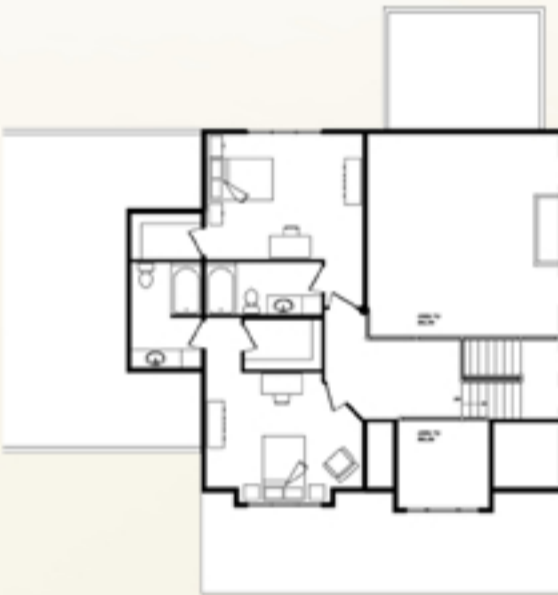
Rockwood

First Floor: 2,324

Second Floor: 841

Total Square Footage: 3,165

Designed to blend into the surrounding environment, the Rockwood shows how a mix of materials—logs, timbers, stone and handcrafted accents—can work together to create the perfect home. The open floor plan features a gourmet kitchen, butler pantry, private first floor master suite and away room. Upstairs are two spacious bedrooms with private baths and walk-in closets.



Whether you're looking for log, timber-style or a hybrid design with a combination of products, we have an extensive library of home designs in a variety of styles and sizes. We can blend elements of several different designs to create a home to fit your personal lifestyle, or we can start from scratch.

From planning and architectural design, to construction, to interior design and décor, we have perfected our Design Build Solution to give our homeowners the ultimate dream home experience.



Call 1-800-678-9107 or e-mail info@wisconsinloghomes.com and one of our home consultants can answer any questions you might have or help you get started with your new home design today.

Thank You,

From your friends at Wisconsin Log Homes



If you have questions or want to send us feedback, please email Stephanie or call 1-800-678-9107.

For video of our custom homes, log on to: www.wisconsinloghomes.com