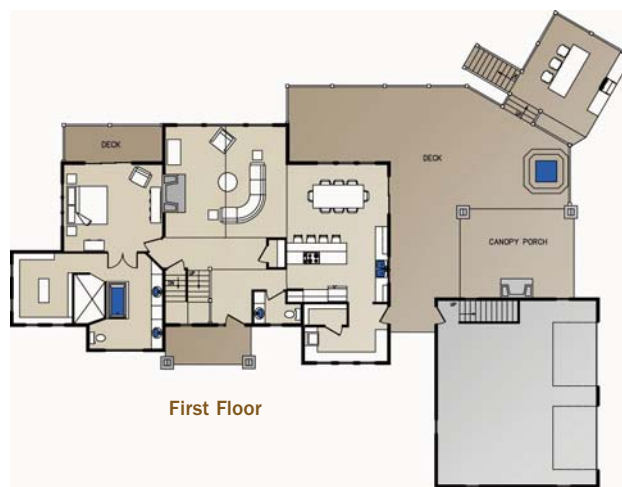
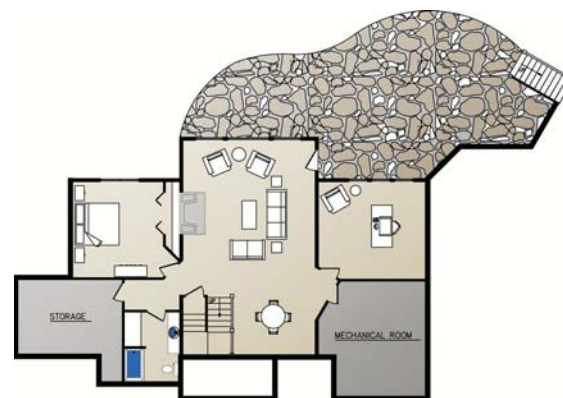




Second Floor



First Floor



Lower Level

St. Claire II

Our National Design & Build Services Include:

- Distinctive Hybrid Log and Timber Product Selection
- Energy Efficient Thermal-Log™ Building System
- On-Site Design Consultations
- Custom Architectural Planning & Design
- Full Service Interior Design and Decor
- Custom Cabinetry Design and Provider
- National Turn-Key Construction Services

Log on to WisconsinLogHomes.com for videos and custom floor plans.

Bedrooms: 4 plus bonus room

Baths: 4 1/2

Square Footage: 5,556

Package Price: Call for prices

Wisconsin Log Homes Inc.

2390 Pamperin Road

Green Bay WI 54313

800-844-7970

fax: 920-434-2140

info@wisconsinloghomes.com

www.wisconsinloghomes.com

Circle 041 on Reader Service Card for free information

www.loghomeliving.com



Taking You Home, Naturally.

MARCH 2009 • LOG HOME LIVING • 79