

Wisconsin Log Homes Inc.



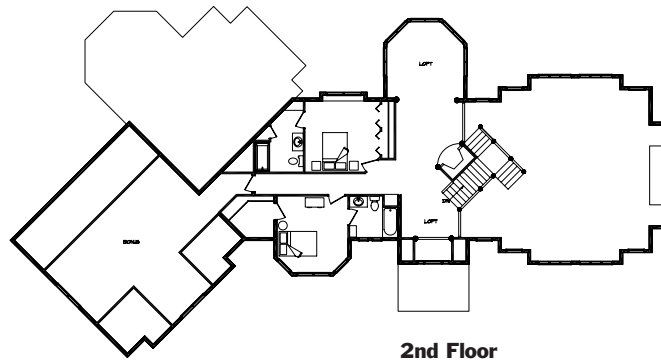
Rustic elegance at its finest. Exceptional design and exquisite detail combine to create the ultimate comforts in mountain-home living. Warm combinations of log, timber and stone; dynamic windows; octagon towers; bump-outs; and an inviting front portico give the Meridian Peak its enticing look.

The two-story great room creates eye-catching drama with massive beams, an impressive fireplace and two striking glass walls. This versatile, open floor plan boasts a magnificent chef's kitchen, secluded master suite with indulging spa bath, and views open to the serene setting from all living spaces. Two additional bedrooms with connecting baths and a bonus room are located upstairs.

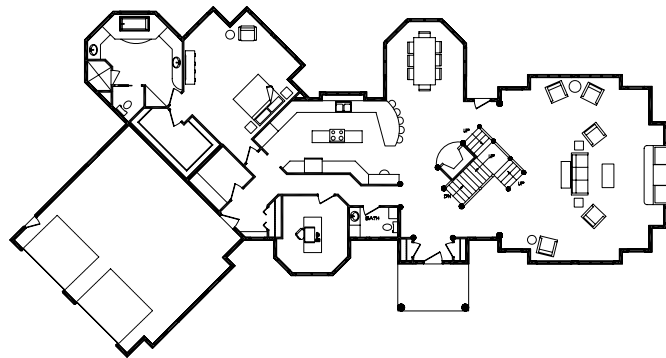
Our Design Build Solution combines architectural design, interior design and decor, and construction. Log on to [www.wisconsinloghomes.com](http://www.wisconsinloghomes.com) for video and custom floor plans.

**Meridian Peak**

- Bedrooms: 3
- Baths: 3 1/2
- Square Footage: 4,926
- Package Price: Call for prices



2nd Floor



1st Floor

2390 Pamperin Road • Dept. 70 • Green Bay WI 54313  
 800-844-7970 • fax: 920-434-2140  
 e-mail: [info@wisconsinloghomes.com](mailto:info@wisconsinloghomes.com) • [www.wisconsinloghomes.com](http://www.wisconsinloghomes.com)  
 Circle 067 on Reader Service Card for free information